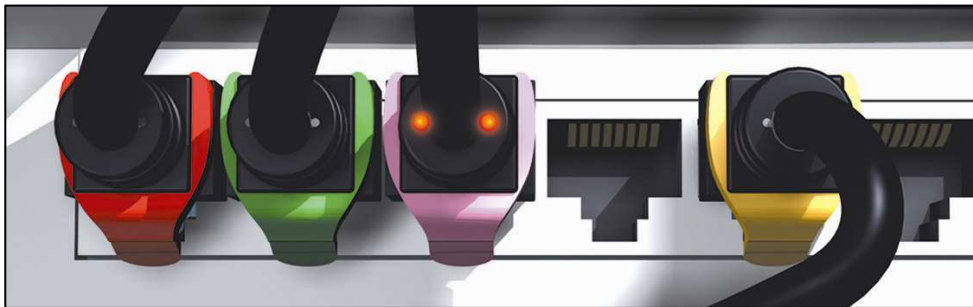


BasicPatch

Cat 5e UTP RJ 45 patch cords

Technical Data Sheet

Patent Pending



Cat 5e RJ 45 Patch Cords :

PatchSee RJ 45 Patch Cords are designed, and individual tested for connecting the network equipment to patch panel and network user outlet. They are warranted for cat 5e TIA/EIA-568-B-2.1 June 2002 Channel test on a Permanent Link certified for transmission frequencies of up to 100 MHz.

PatchSee Concept and main characteristics

- Light identification by plastic optical fiber,
- Many lengths 2 feet (0.6 m) up to 16 feet (4.9 m) for patch panel and terminal link,
- Color cable: Black with white marking,
- Color boot: Grey with white marking,
- Movable color clip, 16 colors available,
- Available in cross patch cord,
- Marking on the boot: length and P/N,
- Unique serial number marking on the cable,
- Individual tested: each patch cord is individual tested,
- Electrical performance tests performed on a sampling basis (1000 Base T Warranty) (Return Loss, Attenuation, NEXT, etc...)

Technical Data Sheet

Construction

Number of pairs	4
Conductor	Stranded bare copper wire
Gage	24 AWG
Insulation	Foam Skin Polyethylene
Pair screen	n a
Optical wave guide	2 POF 0.5 mm
Drain	n a
Jacket	PVC Black with white printing
Overall diameter	5.8 mm
Plug housing	UL 1863 Polycarbonate
Contacts	Moved contacts
Contact Plating	Gold 50 μ inches gold minimum (1.2 μ m)
Shielding	n a

Mechanical Properties of the cable

Fire Propagation Test	Temperature range During operation	Fire load	Bending radius
UL 444 VW 1 Flame test	-20°C up to +75°C	372 MJ/km	>25 mm without load

Electrical Properties of the cable (at 20°C +/- 5°C)

DC loop resistance	Insulation resistance (500V)	Capacitance at 800 Hz	Impedance 1-100MHz	Impedance 100-250MHz	Propagation delay	Test voltage (DC, 1 min)
< 340 Ω /km	> 2000 M Ω *km	Nom. 43nF/km	100 +/- 15 Ω	NA	< 427 ns/100m	1000 V