

# Miniature Thermocouple Connector In-Line Socket



## Features

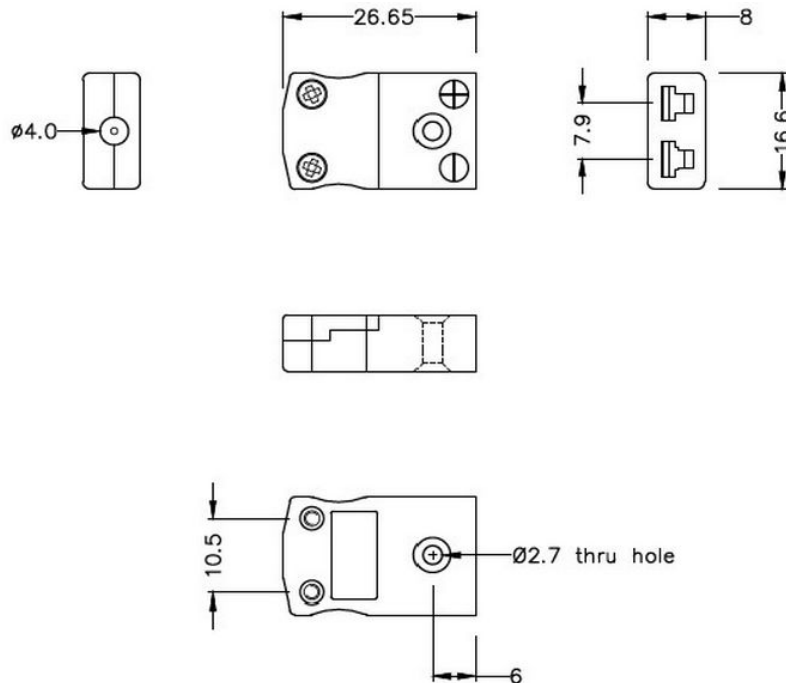
- Ideal for general purpose use
- All contacts are polarised to ensure correct connection
- These connectors will accept thermocouple cable up to 4mm in diameter



## Specification

Sensor Type	J
Connector Size	Miniature
Connector Type	Socket
Colour	Black
Max. Temperature	220 °C
Pins	Flat Pins
+Positive Contact	Fe
-Negative Contact	CuNi
Standards Met	BS EN 50212:1997; RoHS

## Drawing



**Miniature in-line Socket**  
(dimensions in mm)

Art. Nr.  
RND 410-00185