

Miniature Thermocouple Connector Socket



Features

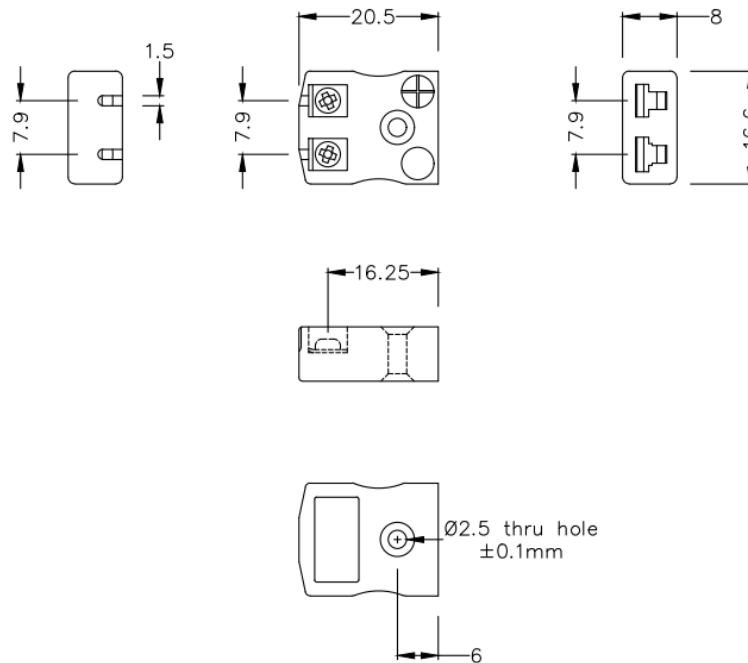
- Easy jab-in connection
- All contacts are polarised to ensure correct connection



Specification

Sensor Type	J
Connector Size	Miniature
Connector Type	Socket
Colour	Black
Max. Temperature	220 °C
Pins	Flat Pins
+Positive Contact	Fe
-Negative Contact	CuNi
Standards Met	BS EN 50212:1997; RoHS

Drawing



Miniature in-line Socket - Quick Wire

(dimensions in mm)

Art. Nr.
RND 410-00191