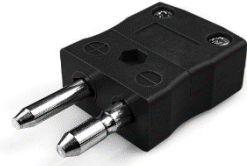


Standard Thermocouple Connector Plug



Features

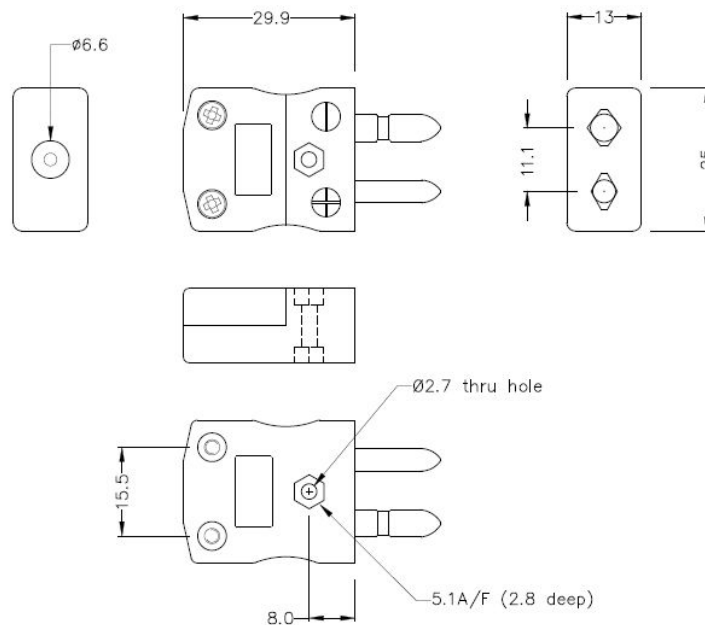
- Contacts are made from true Thermocouple alloys
- Suitable for industrial applications
- Contacts are polarised to prevent incorrect connection



Specification

Sensor Type	J
Connector Size	Standard
Connector Type	Plug
Colour	Black
Max. Temperature	220°C
Pins	Solid Round Pins
+Positive Contact	Fe
-Negative Contact	CuNi
Standards Met	BS EN 50212:1997; RoHS

Drawing



Standard in-line Plug
(dimensions in mm)

Art. Nr.
RND 410-00209