

Standard Thermocouple Connector In-Line Socket



Features

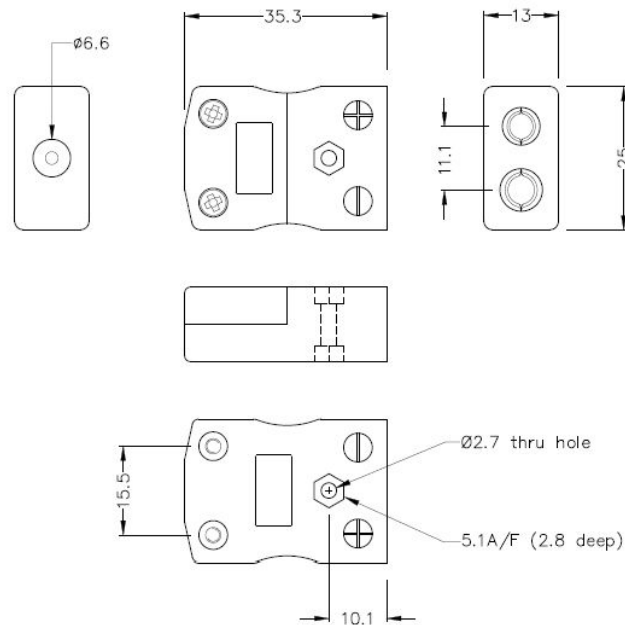
- Accepts standard round plug pins
- Suitable for industrial applications
- Contacts are polarised to prevent incorrect connection



Specification

| | |
|-------------------|------------------------|
| Sensor Type | J |
| Connector Size | Standard |
| Connector Type | Socket |
| Colour | Black |
| Max. Temperature | 220 °C |
| +Positive Contact | Fe |
| -Negative Contact | CuNi |
| Standards Met | BS EN 50212:1997; RoHS |

Drawing



Standard in-line Socket
(dimensions in mm)

Art. Nr.
RND 410-00210