

# Standard Thermocouple Connector In-Line Socket



## Features

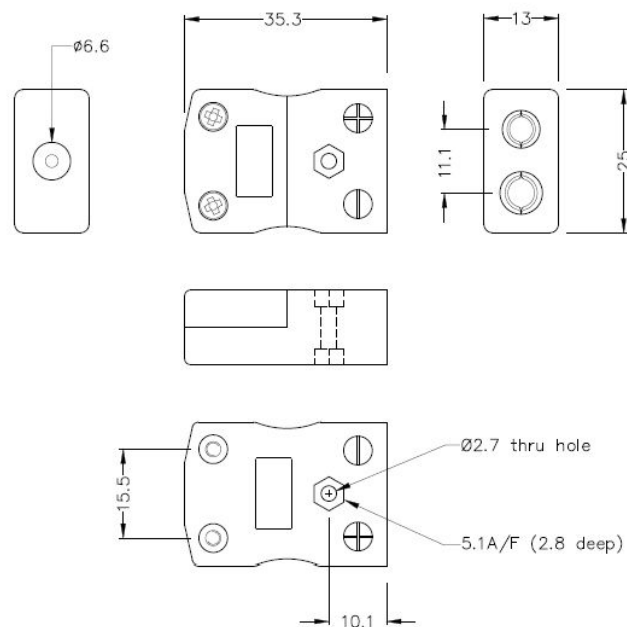
- Accepts standard round plug pins
- Contacts are polarised to prevent incorrect connection
- Its robust design ensures long-term durability and consistent performance, even in demanding operating conditions



## Specification

Sensor Type	T
Connector Size	Standard
Connector Type	Socket
Colour	Brown
Max. Temperature	220 °C
+Positive Contact	Cu
-Negative Contact	CuNi
Standards Met	BS EN 50212:1997; RoHS

## Drawing



**Standard in-line Socket**  
(dimensions in mm)

Art. Nr.  
RND 410-00219