

Standard Thermocouple Connector Plug

Features

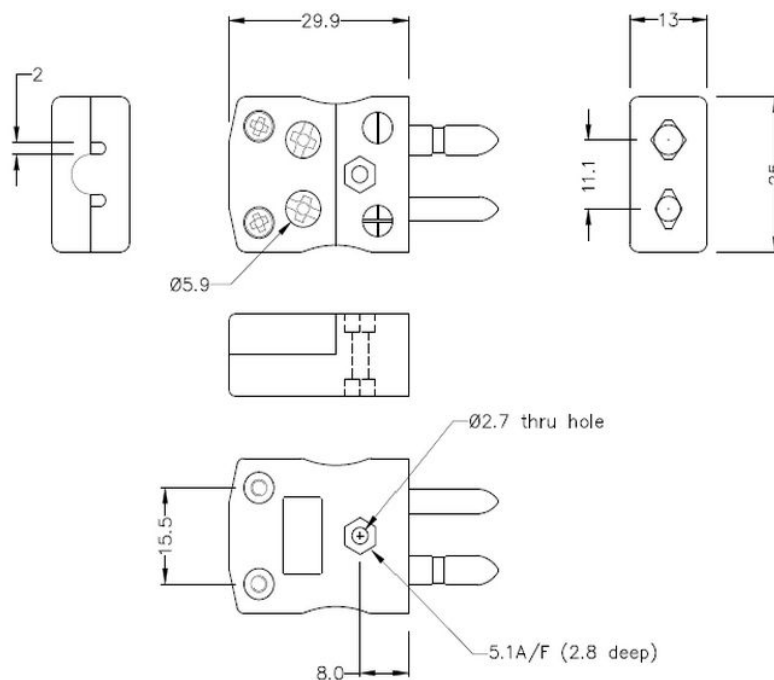
- Easy 'jab-in' connection for rapid termination
- Just push wire in and tighten screw
- Contacts are polarised to prevent incorrect connection



Specification

Sensor Type	T
Connector Size	Standard
Connector Type	Quick Wire Plug
Colour	Brown
Min. Temperature	220 °C
Pins	Solid Round Pins
+Positive Contact	Cu
-Negative Contact	CuNi
Standards Met	BS EN 50212:1997. RoHS

Drawing



Standard in-line Plug - Quick Wire
(dimensions in mm)

Art. Nr.
RND 410-00223