

Split ferrite

$\varnothing \leq 9.3$ mm

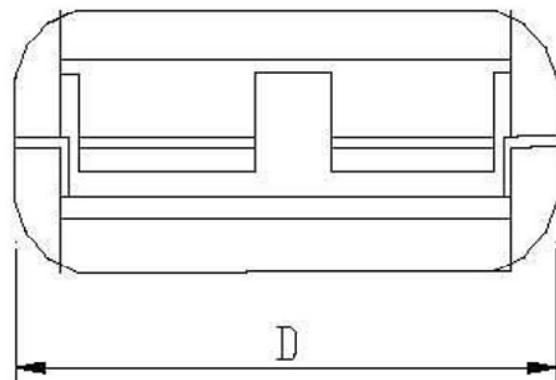
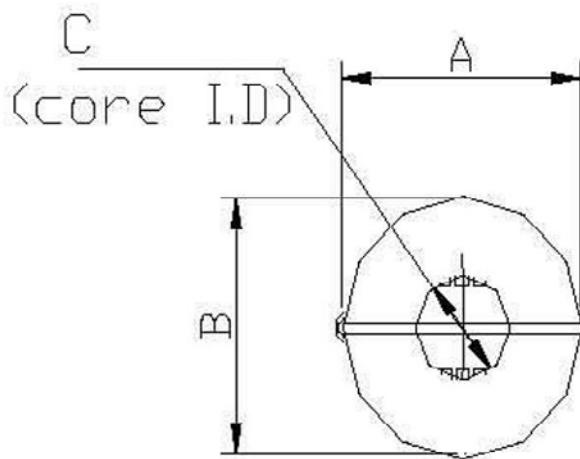


FEATURES:

Round Shape

SPECIFICATION:

For cable size	$\varnothing \leq 9.3$ mm
Colour	black
A	22 mm
B	23.5 mm
C	9.3 mm
D	43 mm
Impedance @ 25 MHz	145 Ω
Impedance @ 100 MHz	246 Ω

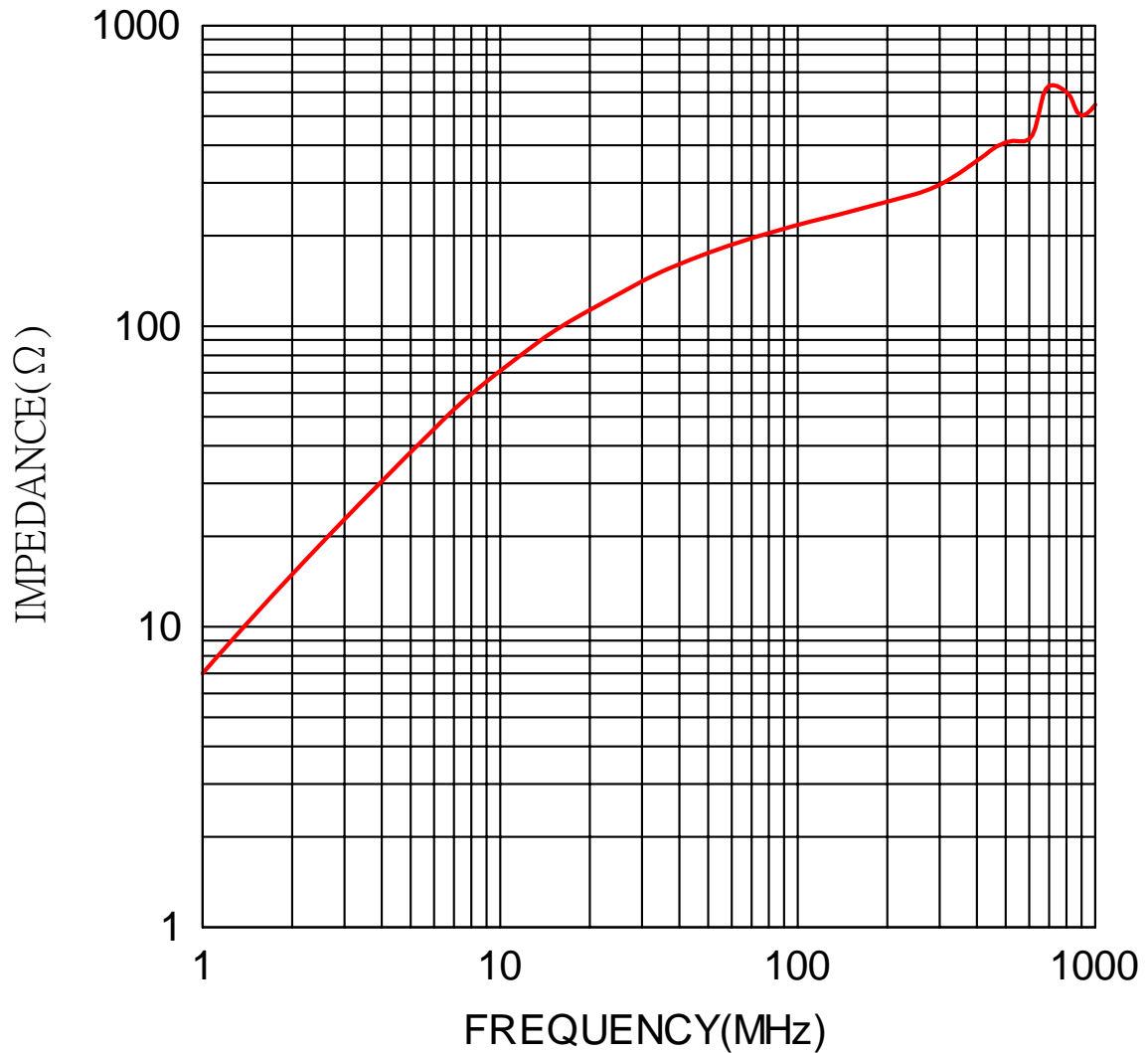


Split ferrite

$\varnothing \leq 9.3 \text{ mm}$

Frequency Graph

1. TEST INSTRUMENT: HP4286A
2. WINDING: 0.4 Φ X90 mm 2 U. E. W 1TS



	1	5	10	25	50	100	200	300	400	500	600	700	800	900	1000
Z —	7	38	71	128	175	217	260	296	355	409	419	631	602	502	546

(DATA BETWEEN 500MHz AND 1000MHz ARE FOR REFERENCE ONLY)

Art. Nr.
RND 165-00014