

Power Inlet with Filter

FEATURES:

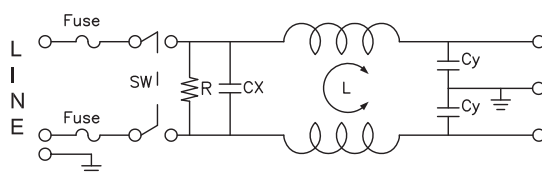
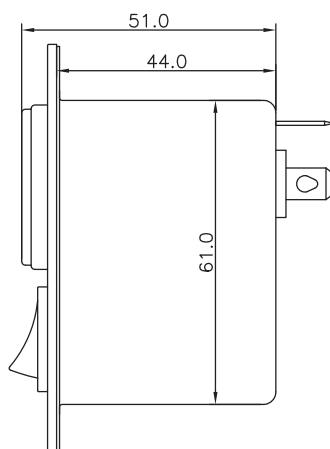
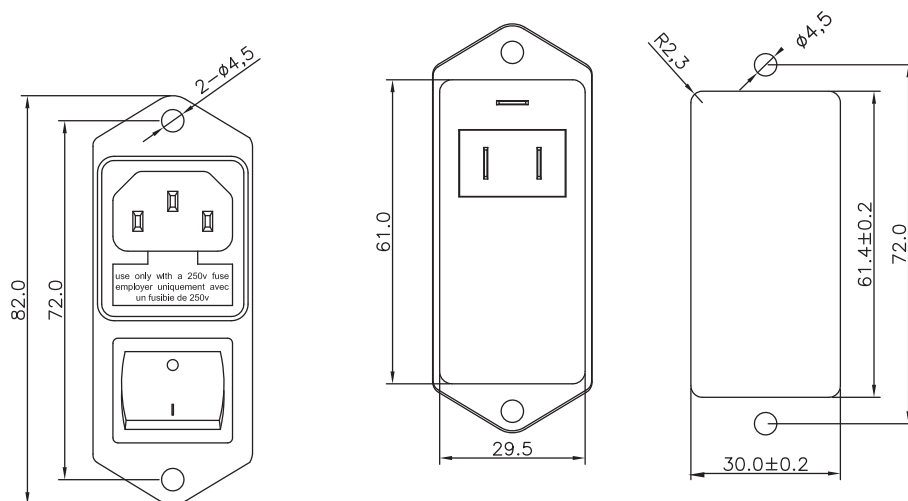
- Compact structure
- Convenient installation
- High cost performance

SPECIFICATION:

Rated voltage	250 VAC
Rated current	6 A
Depth	82 mm
Dimensions H x W x D	51 x 29.5 x 82 mm
Leakage current	0.6 mA@ 250VAC/50Hz
Resistance	50 MΩ
Temperature range	-25 ... +100 °C
Termination typ	Snap-In/Soldering Lugs
Inlet type	C14

Art. Nr.

RND 165-00057



L
O
A
D

L:2x0.45mH
Cx:0.22μF(X2)
Cy:2200pF(Y2)
R:1M ohm