

Power Inlet with Filter

FEATURES:

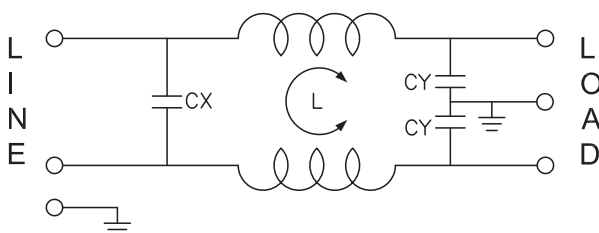
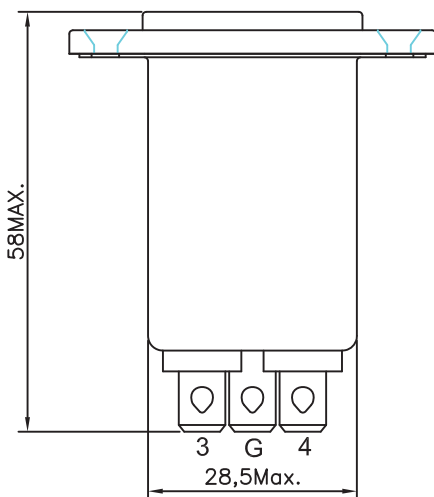
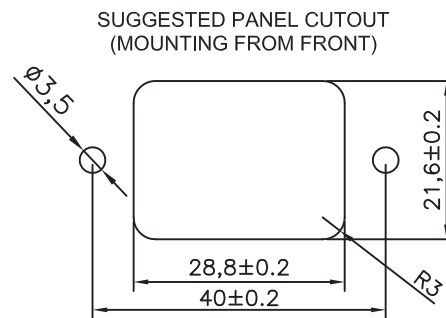
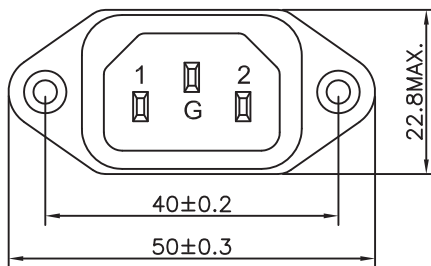
Compact structure
 Convenient installation
 High cost performance

SPECIFICATION:

Rated voltage	250 VAC
Rated current	1 A
Depth	58 mm
Dimensions H x W x D	22.8 x 50 x 58 mm
Leakage current	0.6 mA@ 250VAC/50Hz
Resistance	50 MΩ
Temperature range	-25 ... +85 °C
Termination typ	Snap-In/Soldering Lugs
Inlet type	C14

Art. Nr.

RND 165-00122



L:2x12mH
 Cx:0.1μF(X2)
 Cy:2200pF(Y2)