

EMI Filter

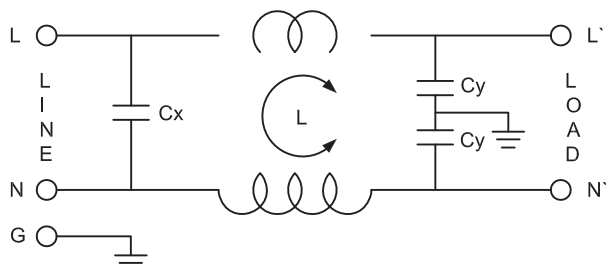
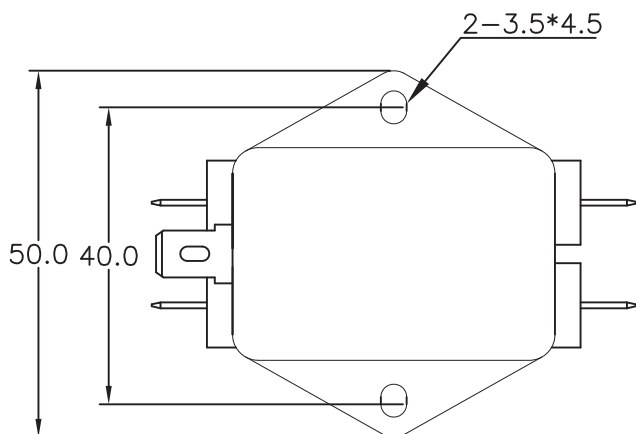
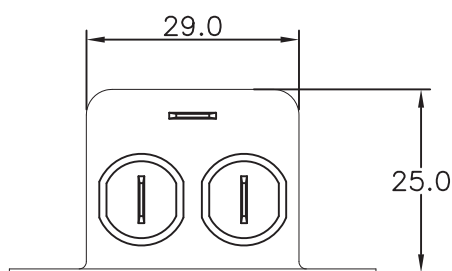
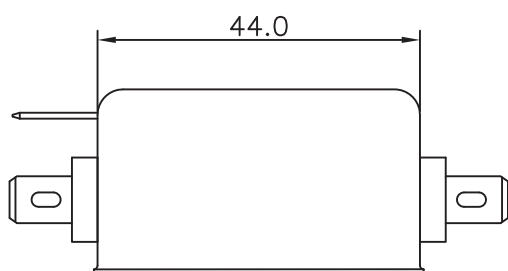
1 A 250 VAC

SPECIFICATION:

Rated voltage	250 VAC
Rated current	1 A
Depth	50 mm
Dimensions H x W x D	25 x 29 x 50 mm
Leakage current	0.6 mA@ 250VAC/50Hz
Resistance	50 MΩ
Temperature range	-25 ... +85 °C
Termination type	Snap-In/Soldering Lugs

Art. Nr.

RND 165-00126



L:2x10mH
Cx:0.015μF(X2)
Cy:2200pF(Y2)