

Connector

SMA 50 Ω, straight



FEATURES:

Crimp Ferrule - Brass, Gold-plated

Gasket – Silicone, Red

Washer - Stainless Steel

SPECIFICATION:

Housing Material Brass (CuZn)/Gold-plated

Series SMA

Center contact Male

Insulation material Teflon

Impedance 50 Ω

Connector Design straight

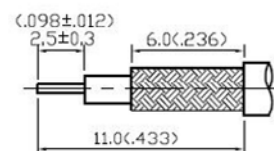
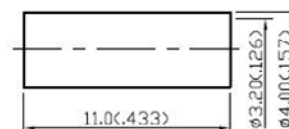
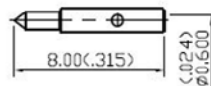
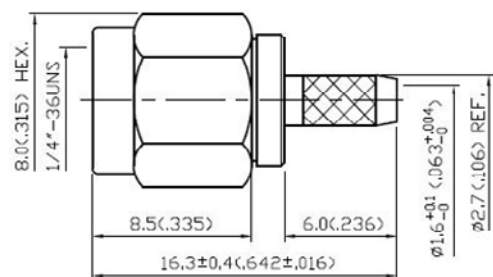
Cable type RG-174U

Contacts gold-plated



Art. Nr.

RND 205-00490



STRIPPING DIMENSION