

Speaker Terminal



Features

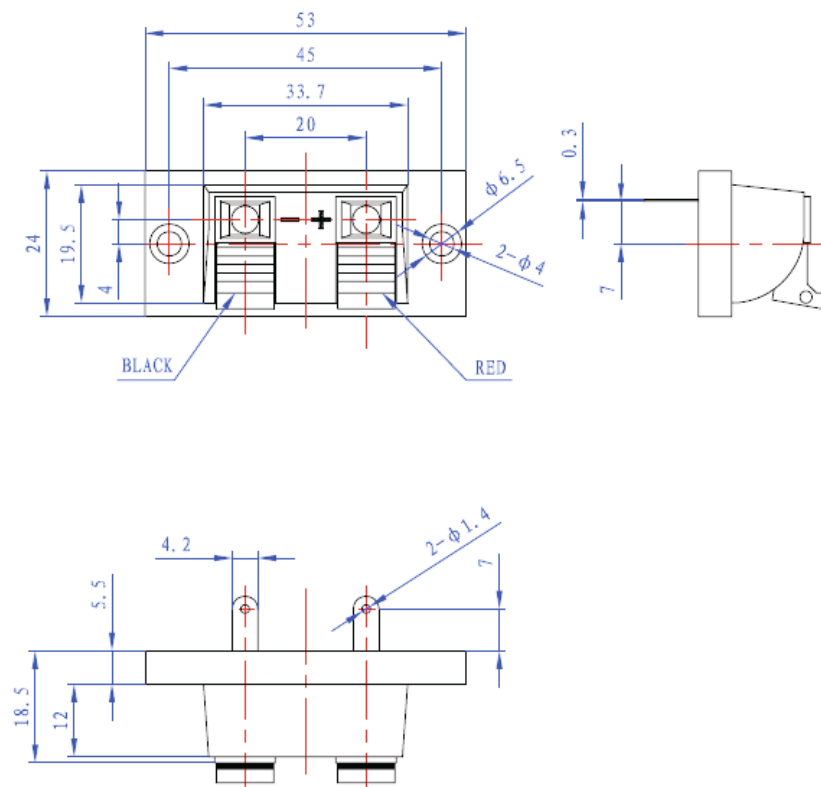
- Clamp connection
- Fully insulated
- Nickel plated contacts



Specification

Connector Type	Speaker Connector
Termination Type	Soldering
Colour	Black
Contact Material	Nickel Plated
Number of Poles	2
Mounting Type	Panel Mount
Gender	Socket
Orientation	Straight
Current Rating	3 A
Voltage Rating	48 V

Drawing



Art. Nr.
RND 205-01502