

# Female Cable Connector



## Features

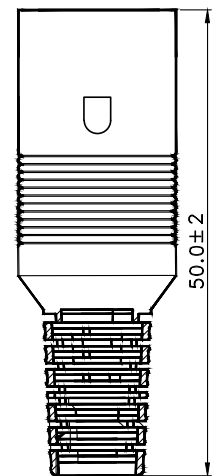
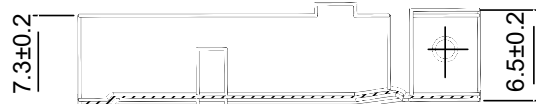
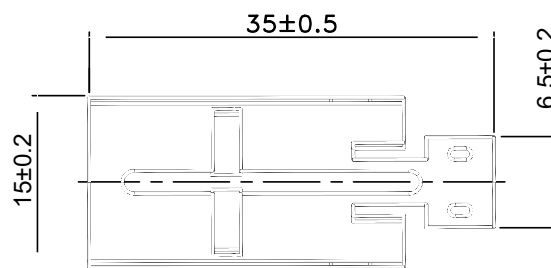
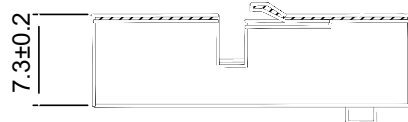
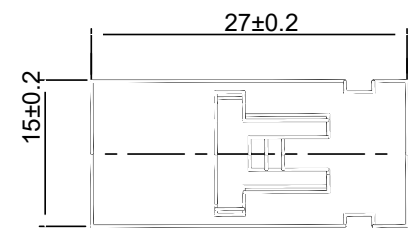
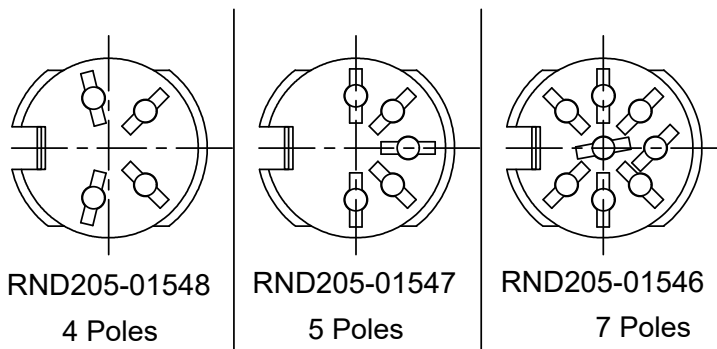
- These poles represent the number of conductors or pins within the connector, allowing for multiple connections and signal transmissions between devices.
- This socket design ensures secure and stable connections when paired with the appropriate male connector.
- It finds utility in industries such as telecommunications, electronics, or machinery, where a moderate number of connections are needed for data transfer, power supply, or control signals.



## Specification

Connector	Cable Connector, Female Panel Connector
Molding	PE, Colour: Black
Shell B	Tinplate, Nickel plated
Shell A	Tinplate, Nickel plated

## Drawing



### ELECTRICAL TEST:

- (1) 100% OPEN SHORT & MISS WIRE TEST
- (2) The product is Reach/RoHS compliant.

