

# LED Indicator Light

## Features

- Projecting LED or with reflector
- Low power consumption
- Can be fixed to PCB circuit boards and mounted on push buttons and switches
- Used within circuit boards and electronic designs

## Specification

Rated Current	20 mA
Circuit Voltage	100 VAC
Series Resistor	22 kOhm (1/2W)
LED & Lamp Colour	Green
LED Voltage	24 V
Insulation Resistance	100 MOhm min. @ 500 VDC
Dielectric Strength	200 VAC for 1 min.
Operating Temperature	-25 ... 70 °C
Hand Soldering	350 +/- 5°C for 3 sec. max.
Luminous Intensity	40 mcd
Peak Wavelength	568 nm

### Pull Force Between Terminal & Base

Normal Type	2 kgf for 1 min.
Sealed Type	5 kgf for 1 min.

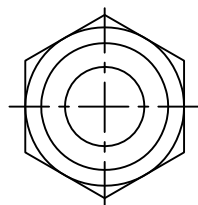
### Pull Force Between Base & Body

Normal Type	2 kgf for 1 min.
Sealed Type	5 kgf for 1 min.

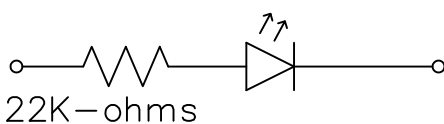
## Material Specification

Body	Polycarbonate UL94V-0 or Acrylic
Base	Glass Fiber Polyamide, UL94-V0
Illuminant	LED
Terminal	Copper Alloy, Tin Plated over Nickel
Washer	Polyamide, UL94-V0 or Iron Hoop
Nut	M10x0.75P or M15x1P Iron

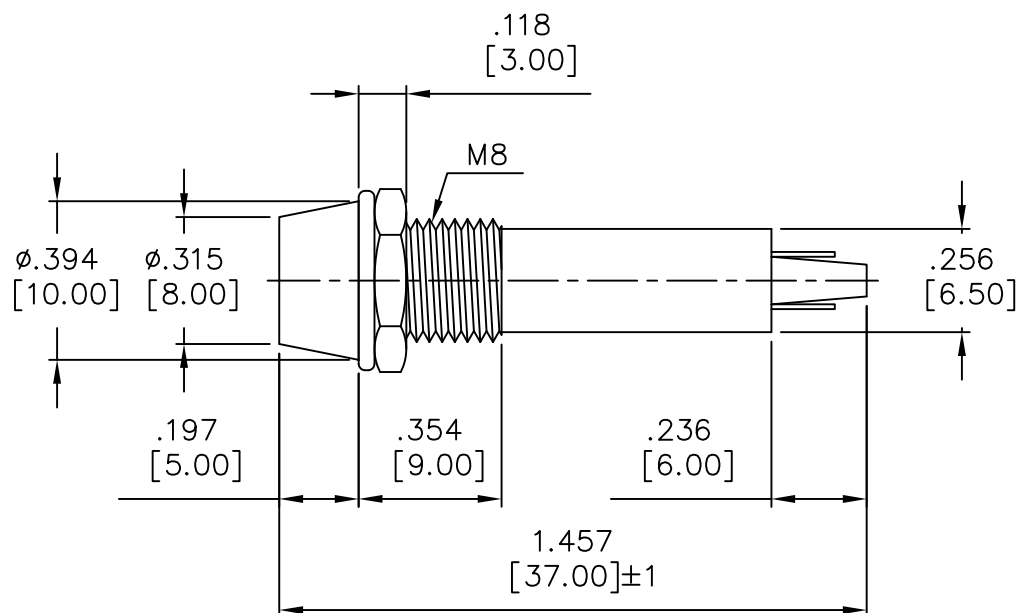
## Drawing



LED



SCHEMATIC



**Art Nr.**

**RND 210-00688**