

Micro Switch

Features

- Snap-action switch
- Micro switch with solder/PCB terminals
- Simple construction and high reliability for long time
- Robust design



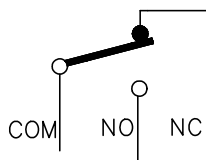
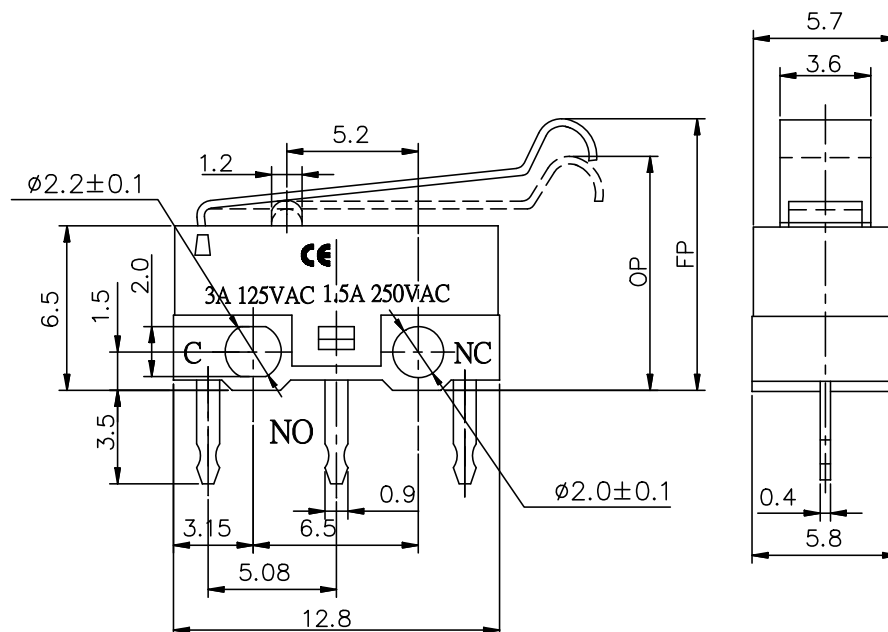
Functional Specification

| | |
|--------------------|------------------------|
| Rated Voltage | 125 VAC / 250 VAC |
| Rated Current | 3 A / 1.5 A |
| Contact Resistance | 100 mOhm |
| Operating Force | 20 ... 50 gf |
| Free Position | 12.8 ± 0.8 mm |
| Operating Position | 10.8 ± 0.8 mm |
| Actuator Type | Simulated Roller Lever |
| Termination Type | PCB Terminals |

Reliability Rating

| | |
|---------------------------------|--------------------|
| Mechanical Life | 500000 Cycles |
| Electrical Life | 10000 Cycles |
| Insulation Resistance | 100 MOhm @ 500 VDC |
| Dielectric Withstanding Voltage | 500 VAC 1 min |
| Soldering Type | Hand Soldering |
| Operating Temperature | -25 ... 65 °C |
| Ambient Humidity | < 85%RH |

Drawing



SCHEMATIC

Art. Nr.
RND 210-00746