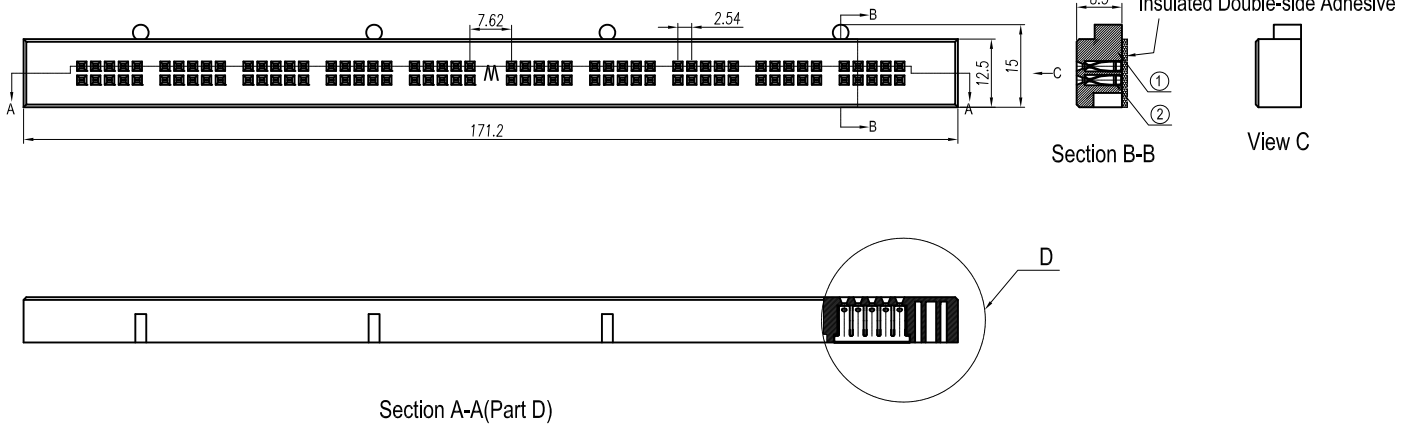
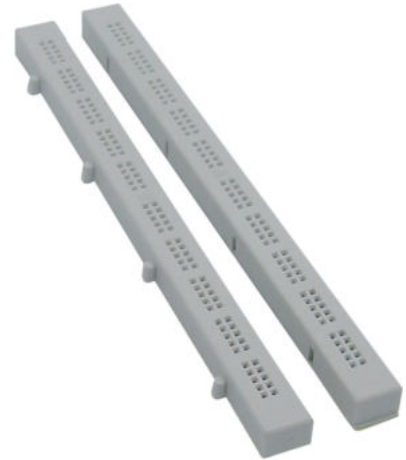


Breadboard

SPECIFICATIONS:

Pitch	2.54 mm
1 Distribution strip	100 tie-point
Rated voltage/current	300 V / 3-5 A
Insulation resistance	500 MΩ / DC 500 V
Withstand voltage	AC 1000 V / 1 min
Wire range	28-20 AWG
Temp. range	-25°C ~ 80°C
Strip length	7-8 mm
Spring clips	Bronze, Ni plated
Housing material	ABS plastic



TOLERANCES EXCEPT AS NOTED

variable range	linear dimension					fillet	chamfer		short angle sid			≡	—	□	//	⊥	
	to 6	over 6 to 30	over 30 to 120	over 120 to 480	over 480 to all		to 6	over 6 to 10	to 10	over 10 to 50	over 50 to 120						over 120 to all
tolerance	±0.1	±0.2	±0.3	±0.5	±0.9	±0.2	±0.5	±1	1'	30'	20'	10'	0.5	0.025	0.06	0.12	0.4

Art. Nr.

RND 255-00024