

Type K Standard Quick Wire Thermocouple Connector Plug & Socket



Features

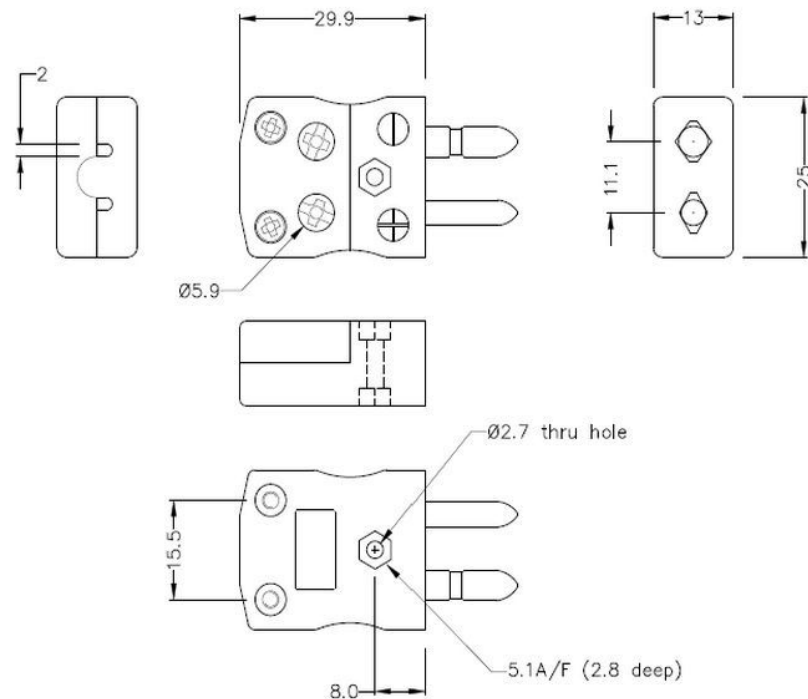
- Easy 'jab-in' connection for rapid termination
- Just push wire in and tighten screw
- Contacts are polarised to prevent incorrect connection



Specification

Thermocouple Type	K
Connector Size	Standard
Connector Type	Quick Wire Plug & Socket
Colour	Green
Max. Temperature	220 °C
Pins	Solid Round Pins
+Positive Contact	Nickel Chromium
-Negative Contact	Nickel Alloy
Standards Met	BS EN 50212:1997. RoHS

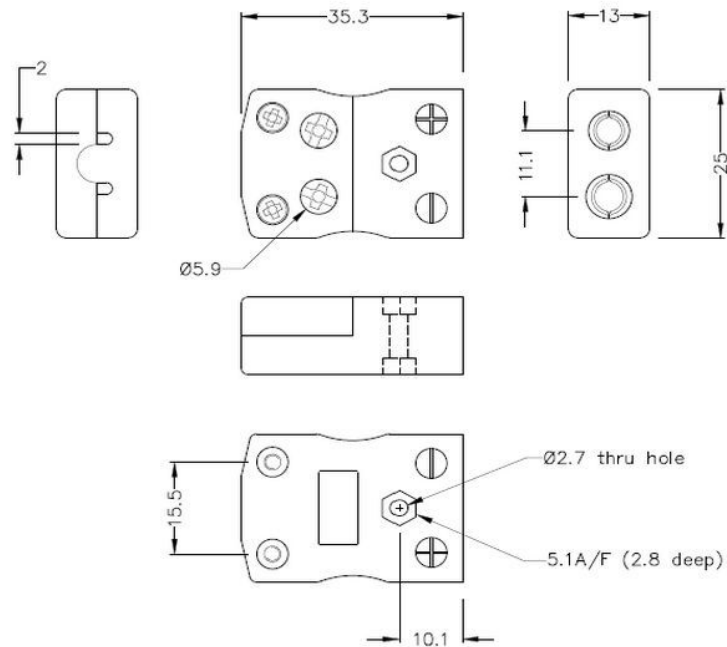
Drawing



Standard in-line Plug - Quick Wire

(dimensions in mm)

Standard Quick Wire Thermocouple Connector Plug & Socket



Standard in-line Socket - Quick Wire
(dimensions in mm)

Art. Nr.
RND 410-00091