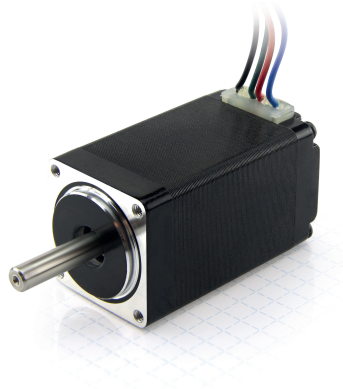


# Hybrid Stepper Motor NEMA 11 (28 x 28 mm)



## Specification

Step Angle	1.8°
Step Angle Accuracy	± 5 %
Number of Phase	2
Rated Voltage	3.75 VDC
Rated Current	0.67 A
Resistance/Phase	5.6 ± 10 % OHMS @ 20 °C
Inductance/Phase	3.4 ± 20 % mH @ 1 KHz
Holding Torque	600 g.cm
Motor Inertia	9 g.cm <sup>2</sup>
Weight	110 g
Temperature Rise	< 80 k
Source Voltage	20 VDC
Insulation Class	B 130 °C
Dielectric Strength	500 VAC
Insulation Resistance	100 MOhm @ 500 VDC
IP	IP30
Operation Ambient	-20...50 °C, Humidity Max 85%
Storage Ambient	-20...85 °C, Humidity Max 85%
Axial-Force	Fa = 7 N Max
Distance	a = 5 mm
Radial Force	Fr = 28 N Max
Shaft Radial Play	0.02 mm Max. @4 N
Shaft Axial Play	0.08 mm Max. @4 N

**Art. Nr.**  
**RND 420-00001**

Drawings

