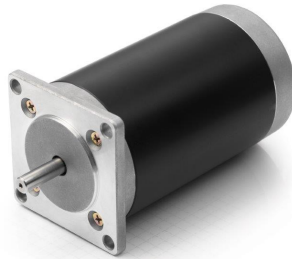


Hybrid Stepper Motor NEMA 23 (56 x 56 mm)



Specification

Step Angle	1.8°
Step Angle Accuracy	± 5 %
Number of Phase	2
Rated Voltage	2.38 VDC
Rated Current	2.8 A
Resistance/Phase	0.85 ± 10 % ohms @ 20 °C
Inductance/Phase	2.1 ± 20 % mH @ 1 KHz
Holding Torque	69 N.cm
Motor Inertia	110 g.cm ²
Weight	0.6 kg
Temperature Rise	< 80 k
Source Voltage	24 VDC
Insulation Class	B 130 °C
Dielectric Strength	500 VAC
Insulation Resistance	100 MOhm @ 500 VDC
IP Class	IP30
Operation Ambient	-25...40 °C, Humidity Max 85%
Storage Ambient	-10...35 °C, Humidity Max 85%
Axial-Force	Fa = 15 N Max
Distance	a = 20 mm
Radial Force	Fr = 75 N Max
Shaft Radial Play	0.02 mm Max. @4.5 N
Shaft Axial Play	0.08 mm Max. @4.5 N

Art. Nr.
RND 420-00011

Drawings

