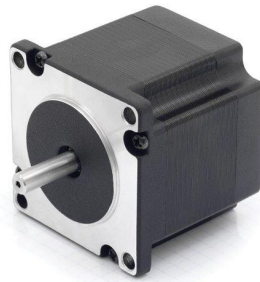


# Hybrid Stepper Motor NEMA 23 (56 x 56 mm)



## Specification

Step Angle	1.8°
Step Angle Accuracy	± 5 %
Number of Phase	4
Rated Voltage	4.5 VDC
Rated Current	2.0 A
Resistance/Phase	2.25 ± 10 % ohms @ 20 °C
Inductance/Phase	3.6 ± 20 % mH @ 1 KHz
Holding Torque	1.35 N.m
Detent Torque	6.8 N.m
Motor Inertia	480 g.cm <sup>2</sup>
Weight	1 kg
Temperature Rise	< 80 k
Insulation Class	B 130 °C
Dielectric Strength	600 VAC
Insulation Resistance	100 MOhm @ 500 VDC
IP Class	IP30
Operation Ambient	-20...50 °C, Humidity Max 85%
Storage Ambient	-10...35 °C, Humidity Max 85%
Axial-Force	Fa = 15 N Max
Distance	a = 20 mm
Radial Force	Fr = 75 N Max
Shaft Radial Play	0.02 mm Max. @4 N
Shaft Axial Play	0.08 mm Max. @4 N

**Art. Nr.**  
**RND 420-00020**

Drawings

