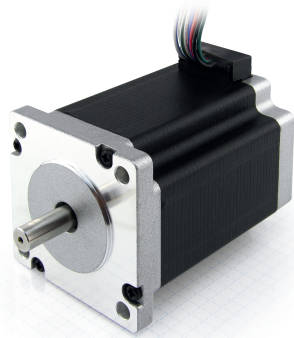


Hybrid Stepper Motor NEMA 24 (60 x 60 mm)



Specification

Step Angle	1.8°
Step Angle Accuracy	± 5 %
Number of Phase	4
Rated Voltage	3.6 VDC
Rated Current	2 A
Resistance/Phase	1.8 ± 10 % ohms @ 20 °C
Inductance/Phase	3.6 ± 20 % mH @ 1 KHz
Holding Torque	1.17 N.m
Motor Inertia	400 g.cm ²
Weight	0.77 kg
Temperature Rise	< 80 k
Source Voltage	24 VDC ~ 48 VDC
Insulation Class	B 130 °C
Dielectric Strength	500 VAC
Insulation Resistance	100 MOhm @ 500 VDC
IP Class	IP30
Operation Ambient	-20...50 °C, Humidity Max 85%
Storage Ambient	-20...85 °C, Humidity Max 85%
Axial-Force	Fa = 15 N Max
Distance	a = 20 mm
Radial Force	Fr = 75 N Max
Shaft Radial Play	0.02 mm Max. @4 N
Shaft Axial Play	0.08 mm Max. @4 N

Art. Nr.
RND 420-00024

Drawings

