

Prototyping board

For RND DIN Rail Module Enclosures



FEATURES:

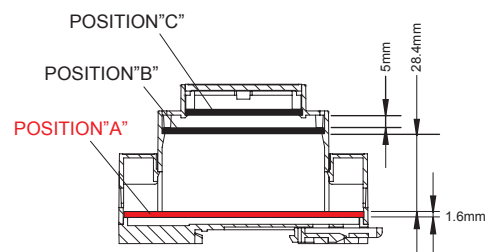
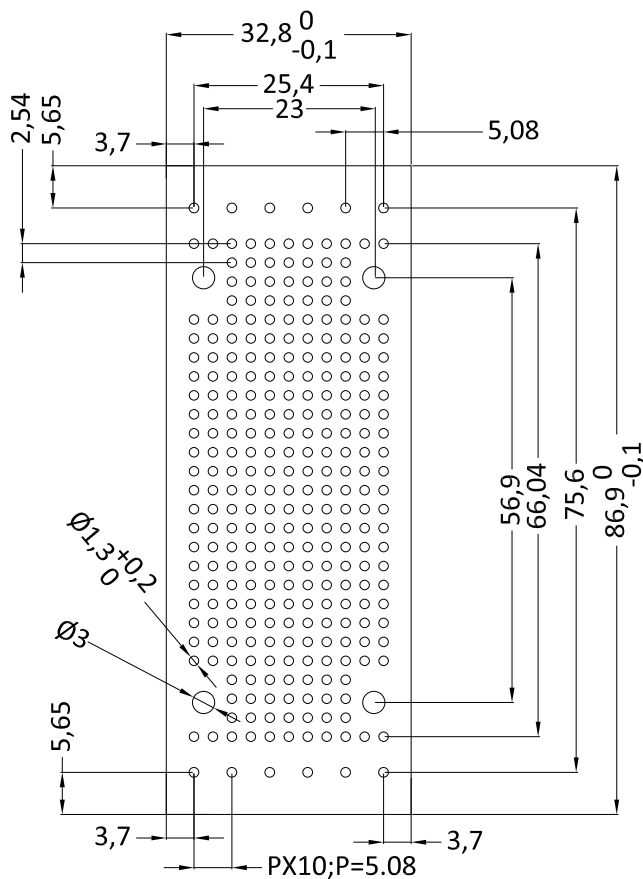
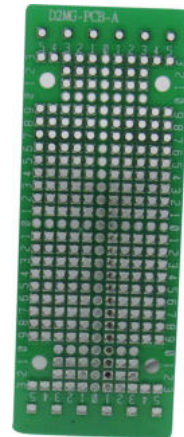
Prototyping board for RND DIN rail module enclosures

SPECIFICATION:

Dimensions L x W	32.8 x 86.9 mm
Board thickness	1.6 mm

Art. Nr.

RND 455-00553



PCB of position "A" for RND 455-00534