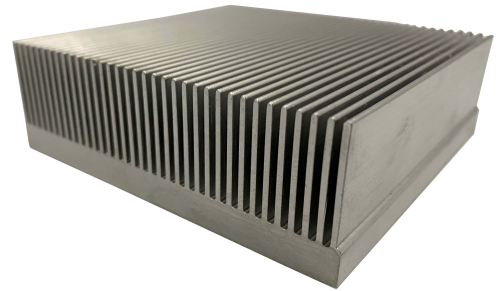


# Heat Sink, Mill, 150mm

## Features

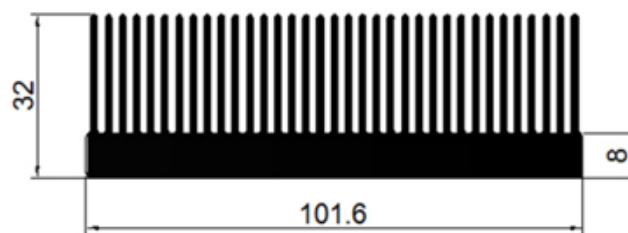
- RoHS compliant
- Tolerances in accordance with BS EN 12020/ BS EN 755
- Excellent performance for a one piece extrusion
- Ideal with LED, Traction, Hi-Fi and UPS applications



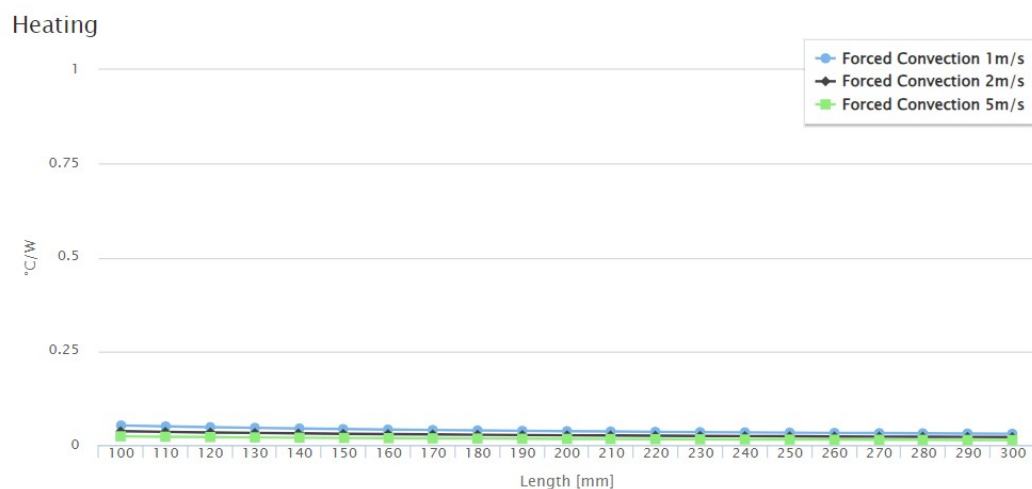
## Specification

Finish	Natural (Mill Finish)
Material	Aluminium Alloy
Height	32 mm
Width	101.6 mm
Length	150 mm
Performance	0.08 Deg C / Watt
Tolerance on Length	+/- 0.5 mm
Tolerance on Bow	+/- 0.125 mm per 25 mm width

## Drawing



## Heating



Art. Nr.  
RND 460-00178