

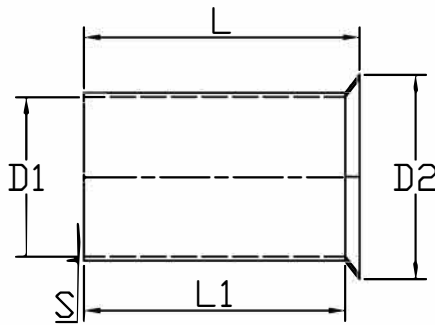
Non-Insulated Cord-End Sleeve



Specification

Terminal Material	Tin Plated Copper Tube
Insulation Material	Non-insulated
Max Current	9 A
Wire Range	22 AWG

Drawing



L	8 mm
D1	1 mm
D2	1.9 mm
L1	7.3 mm
S	0.15 mm

Art. Nr.
RND 465-01367