

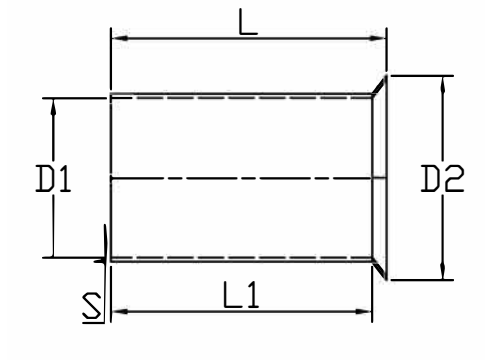
Non-Insulated Cord-End Sleeve



Specification

Terminal Material	Tin Plated Copper Tube
Insulation Material	Non-insulated
Max Current	18 A
Wire Range	16 AWG

Drawing



L	10 mm
D1	1.7 mm
D2	2.8 mm
L1	9 mm
S	0.15 mm

Art. Nr.
RND 465-01370