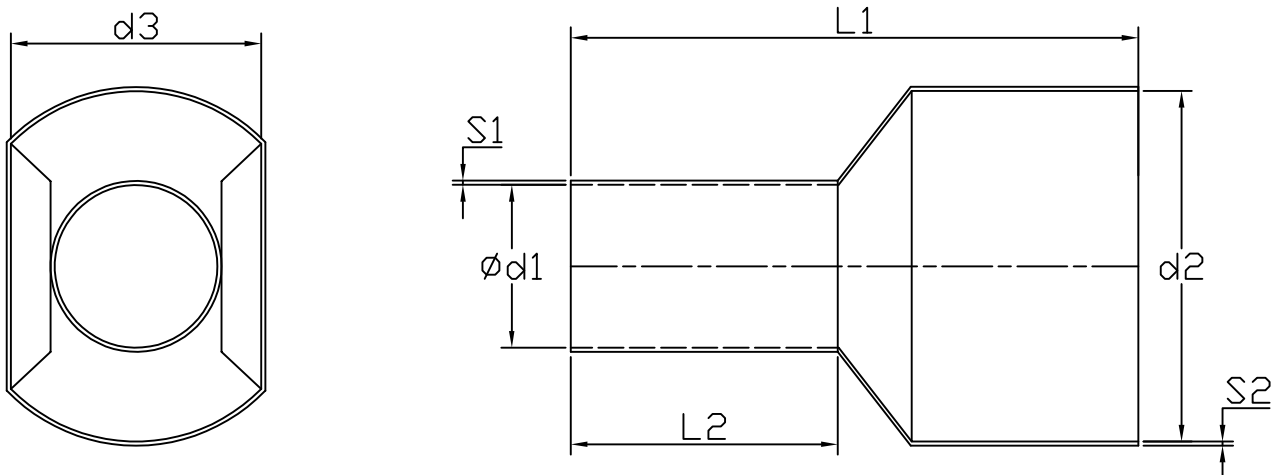




Specification

Terminal Material	Tin Plated Copper Tube
Insulation Material	Polyamide
Max Temperature	105 °C
Max Voltage	600 V
Max Current	9 A
Wire Range	2 x 22 AWG

Drawing



$\varnothing d1$	1.5 mm
$d2$	4.7 mm
$d3$	2.5 mm
$L1$	15 mm
$L2$	8 mm
$S1$	0.15 mm
$S2$	0.30 mm

Art. Nr.
RND 465-01373