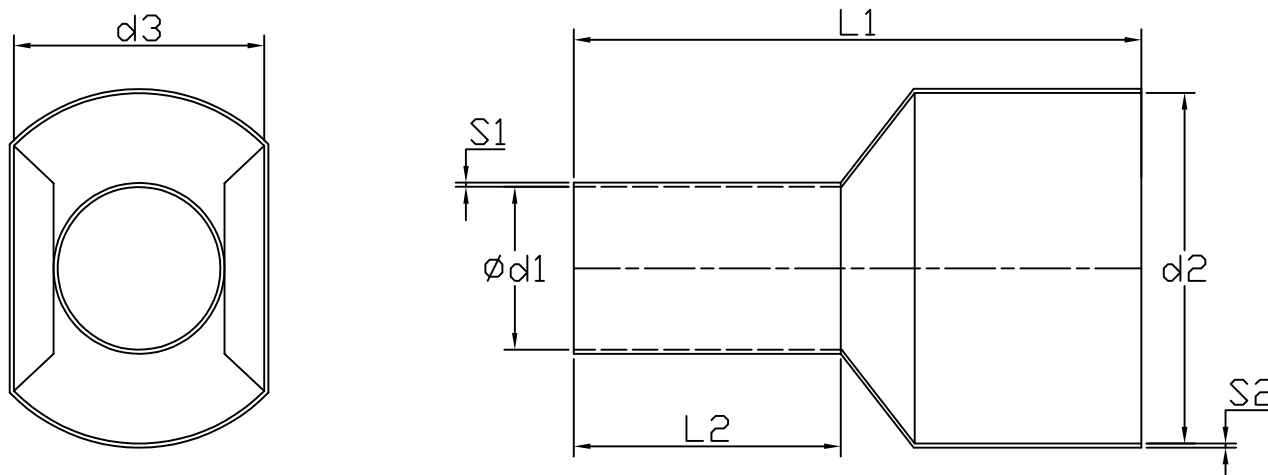


## Specification

Terminal Material	Tin Plated Copper Tube
Insulation Material	Polyamide
Max Temperature	105 °C
Max Voltage	600 V
Max Current	12 A
Wire Range	2 x 20 AWG

## Drawing



$\varnothing d1$	1.8 mm
$d2$	5 mm
$d3$	2.8 mm
$L1$	15 mm
$L2$	8 mm
$S1$	0.15 mm
$S2$	0.30 mm

Art. Nr.  
RND 465-01374