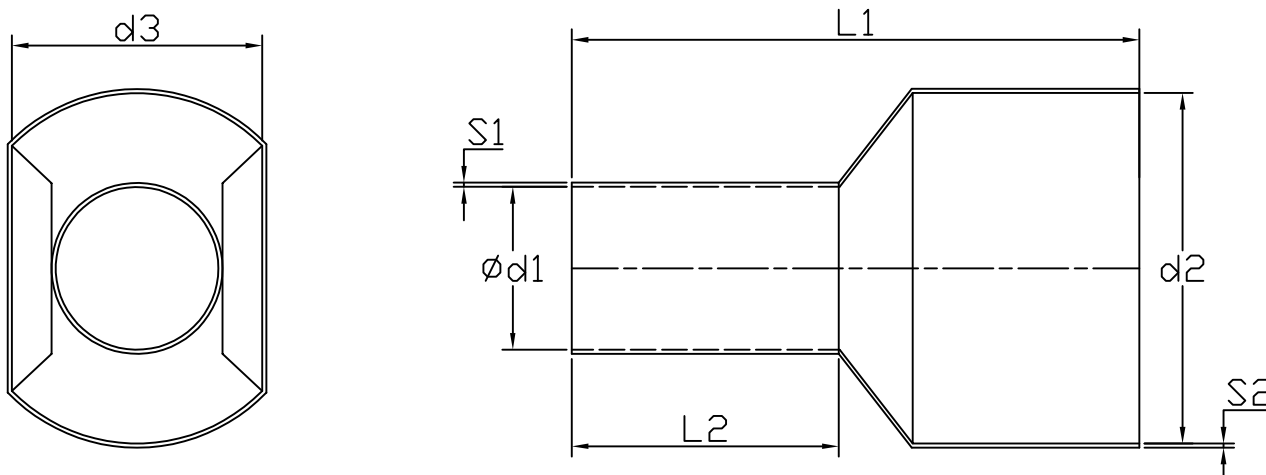


Specification

Terminal Material	Tin Plated Copper Tube
Insulation Material	Polyamide
Max Temperature	105 °C
Max Voltage Max	600 V
Max Current	17 A
Wire Range	2 x 18 AWG

Drawing



Ød1	2.05 mm
d2	5.4 mm
d3	3.4 mm
L1	15 mm
L2	8 mm
S1	0.15 mm
S2	0.40 mm

Art. Nr.
RND 465-01375