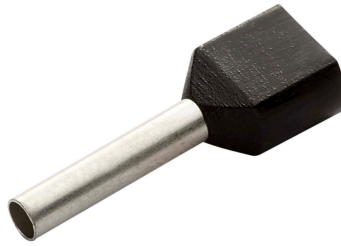


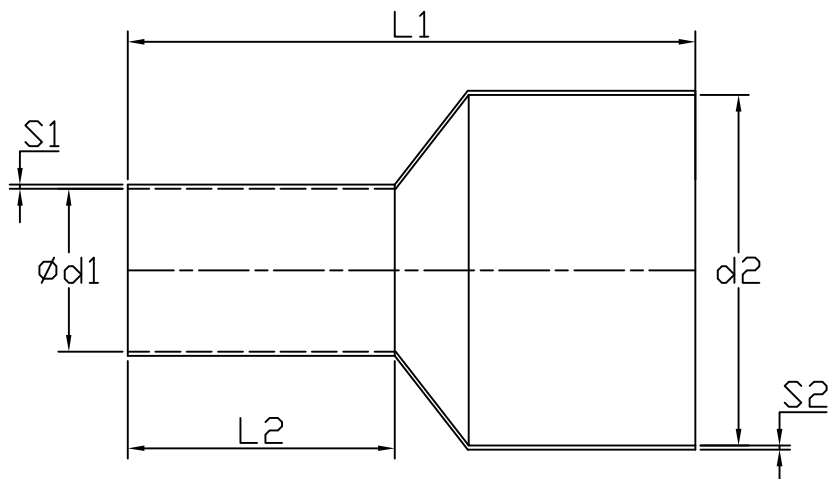
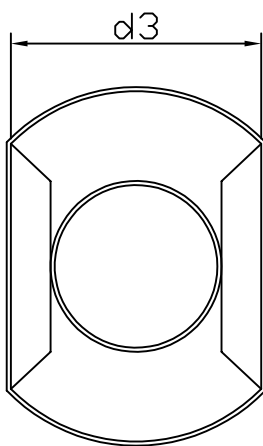
Twin Cord-End Terminal



Specification

Terminal Material	Tin Plated Copper Tube
Insulation Material	Polyamide
Max Temperature	105 °C
Max Voltage Max	600 V
Max Current	18 A
Wire Range	2 x 16 AWG

Drawing



Ød1	2.2 mm
d2	6.6 mm
d3	3.6 mm
L1	16 mm
L2	8 mm
S1	0.15 mm
S2	0.40 mm

Art. Nr.
RND 465-01376