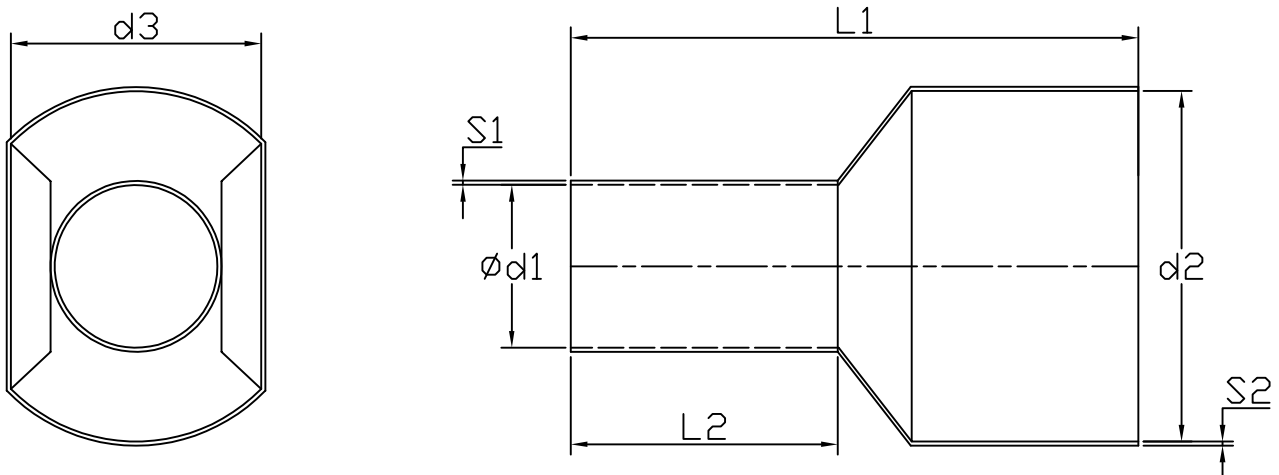


Specification

Terminal Material	Tin Plated Copper Tube
Insulation Material	Polyamide
Max Temperature	105 °C
Max Voltage Max	600 V
Max Current	30 A
Wire Range	2 x 2.50 mm ²

Drawing



Ød1	2.8 mm
d2	7.8 mm
d3	4.2 mm
L1	18.5 mm
L2	10 mm
S1	0.20 mm
S2	0.40 mm

Art. Nr.
RND 465-01377