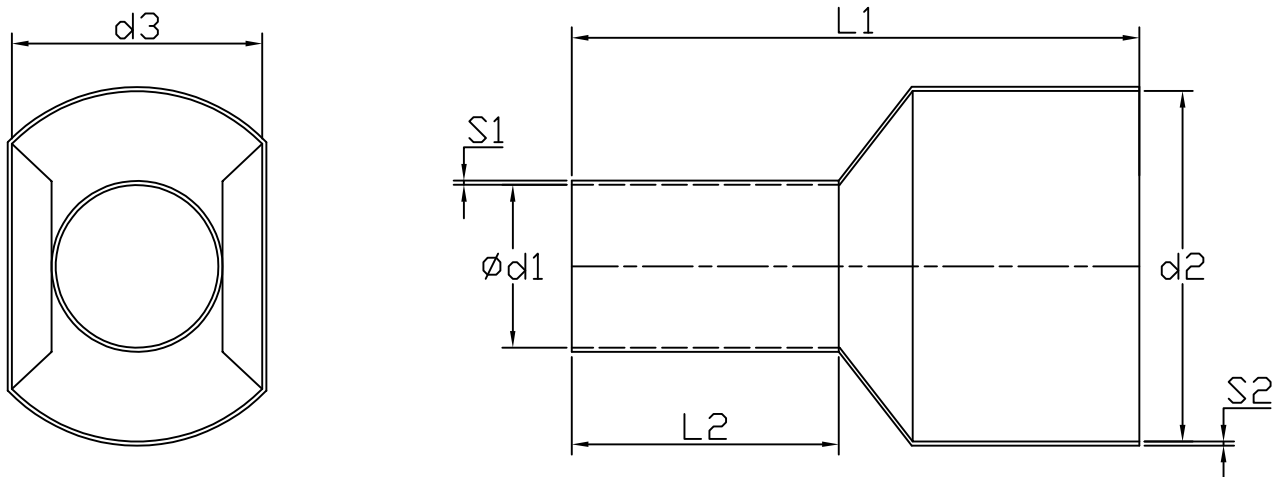


Specification

| | |
|---------------------|------------------------|
| Terminal Material | Tin Plated Copper Tube |
| Insulation Material | Polyamide |
| Max Temperature | 105 °C |
| Max Voltage Max | 600 V |
| Max Current | 50 A |
| Wire Range | 2 x 6 mm ² |

Drawing



| | |
|-----|---------|
| Ød1 | 4.8 mm |
| d2 | 10 mm |
| d3 | 6.9 mm |
| L1 | 26 mm |
| L2 | 14 mm |
| S1 | 0.20 mm |
| S2 | 0.45 mm |

Art. Nr.
RND 465-01379