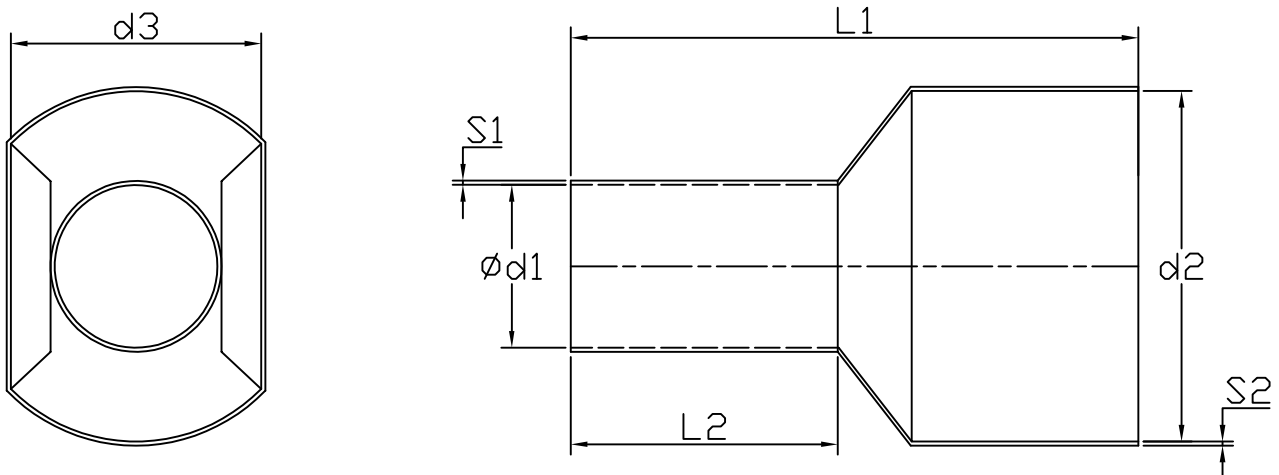


Specification

Terminal Material	Tin Plated Copper Tube
Insulation Material	Polyamide
Max Temperature	105 °C
Max Voltage Max	600 V
Max Current	95 A
Wire Range	2 x 16 mm ²

Drawing



Ød1	8.3 mm
d2	18.4 mm
d3	9.6 mm
L1	30 mm
L2	14 mm
S1	0.30 mm
S2	0.55 mm

Art. Nr.
RND 465-01381