

Features

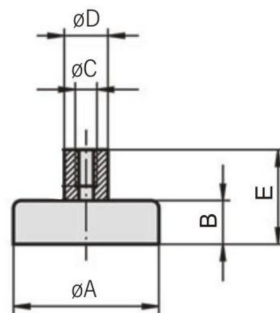
- The magnets are protected in steel cups, which greatly increases the life of the magnets
- Can be screwed into the wall or ceiling with an appropriate countersunk screw
- Maximum operating temperature of 200 °C
- Ideal magnet assembly for consumer & industrial applications which require medium magnetic strength, such as lifting, antenna or light mounts, latches, furniture & home repair projects, closing mechanisms, retrieving objects & more



Material

Housing steel and ferrite disc magnet

Specification



| Model | A (mm) | B (mm) | C | D (mm) | E (mm) | Weight (g) | Pull Force (kg) |
|---------------|-----------|-----------|-----|-----------|-----------|---------------|--------------------|
| RND 610-00895 | 20 | 6 | M3 | 6 | 13 | 11 | 3 |
| RND 610-00896 | 32 | 7 | M4 | 8 | 15 | 31 | 8.1 |
| RND 610-00897 | 40 | 8 | M5 | 10 | 18 | 59 | 12.7 |
| RND 610-00898 | 50 | 10 | M6 | 12 | 22 | 110 | 22.4 |
| RND 610-00899 | 63 | 14 | M8 | 15 | 30 | 450 | 35.7 |
| RND 610-00900 | 80 | 18 | M10 | 20 | 34 | 499 | 61.2 |