

Features

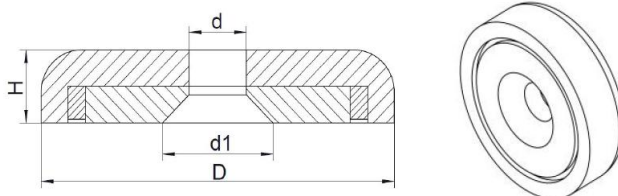
- The magnets are protected in steel cups, which greatly increases the life of the magnets
- Can be screwed into the wall or ceiling with an appropriate countersunk screw
- Maximum operating temperature of 80° C
- Widely used in window dressing, door / cupboard and gate clamps, false ceiling clamps, signs and banners, torque limited seals, jigs and fixtures, lighting holders, marketing and exhibition displays, retrieval magnets, industrial fixings, etc



Material

Housing steel and sintered neodymium countersunk magnet

Specification



Model	D (mm)	D (mm)	d1 (mm)	H (mm)	Weight (g)	Pull Force (kg)
RND 610-00912	16	3.5	6.5	5	7	6
RND 610-00913	20	4.5	8.6	7	14	11
RND 610-00914	25	5.5	10.6	8	25	20