



## Main

Range of product	Zelio Relay
Product or component type	Socket
Contact terminal arrangement	Separate
Product compatibility	Plug-in relay RXM (2 C/O) Plug-in relay RXM (4 C/O)
Shape of pin	Flat
Device short name	RXZ
Sale per indivisible quantity	10

## Complementary

[I <sub>th</sub> ] conventional free air thermal current	12 A , 2 C/O relays 6 A , 4 C/O relays
[U <sub>e</sub> ] rated operational voltage	< 250 V AC
Fixing mode	Clip-on 35 mm symmetrical DIN rail
Marking	CE
Width	31 mm
Product weight	0.073 kg
Group of product	RXM_2-4_C/O_CON_SEP_FLAT
Compatibility code	RXZ

## Environment

Connections - terminals	Spring clamp terminals (push 'n stay), flexible cable with cable end 1 x 0.5...1 x 1.5 mm <sup>2</sup> / AWG 20...AWG 16 Spring clamp terminals (push 'n stay), solid cable without cable end 1 x 0.5...1 x 1.5 mm <sup>2</sup> / AWG 20...AWG 16
Standards	IEC 61984
Product certifications	CSA GOST UL

Lloyd's

Ambient air temperature for storage	-40...85 °C
Ambient air temperature for operation	-40...55 °C
IP degree of protection	IP20 conforming to EN/IEC 60529
Dielectric strength	2500 V

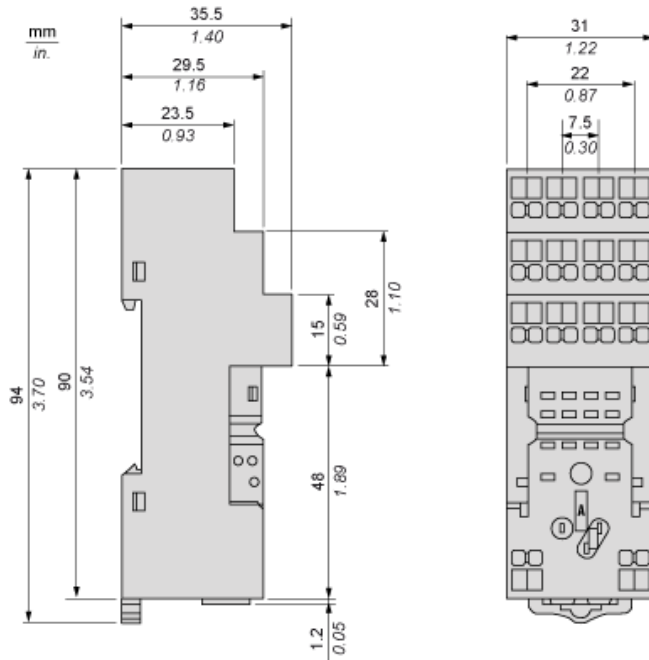
### Offer Sustainability

Sustainable offer status	Green Premium product
RoHS (date code: YYWW)	Compliant - since 0627 - Schneider Electric declaration of conformity <a href="#">Schneider Electric declaration of conformity</a>
REACH	Reference not containing SVHC above the threshold <a href="#">Reference not containing SVHC above the threshold</a>
Product environmental profile	Available <a href="#">Product environmental</a>
Product end of life instructions	Need no specific recycling operations

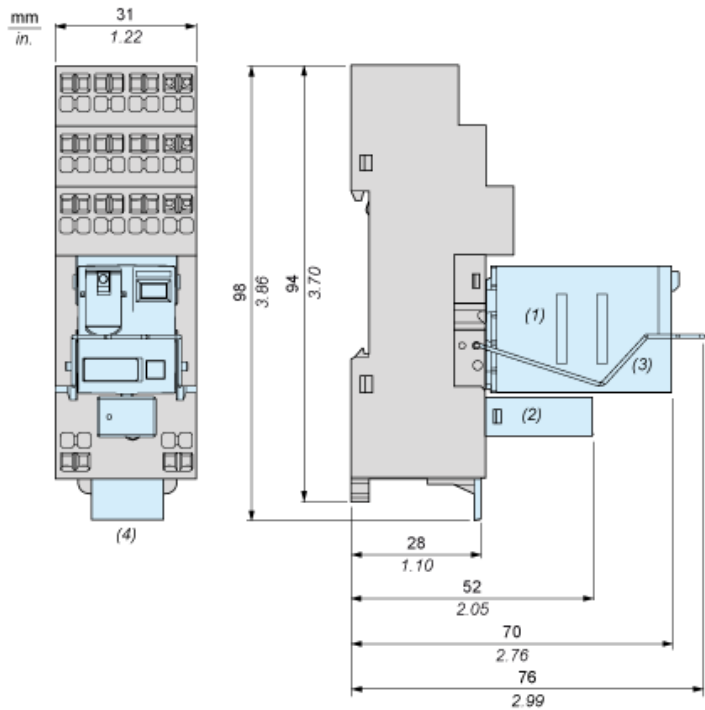
### Contractual warranty

Warranty period	18 months
-----------------	-----------

Socket Only

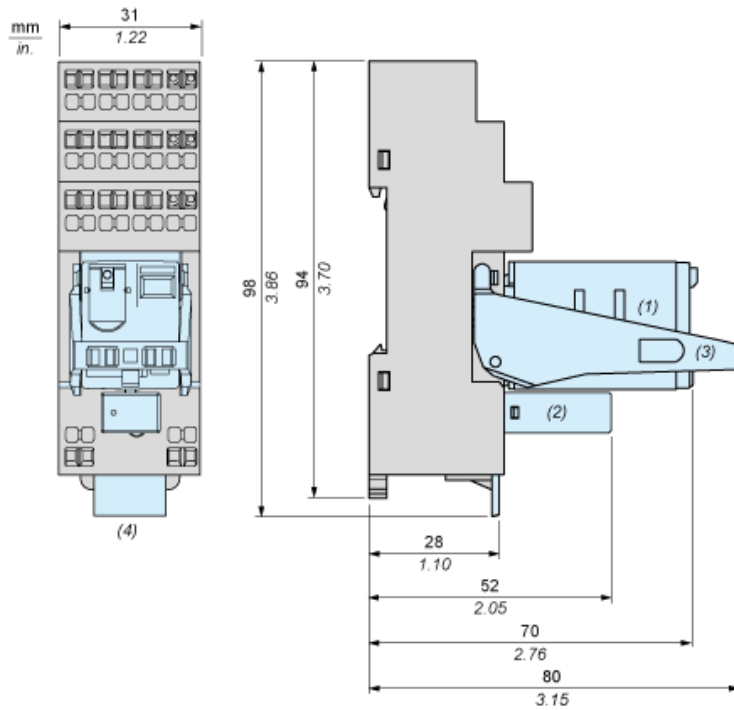


Socket with Relay and Metal Maintaining Clamp



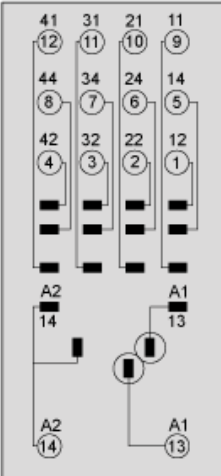
- (1) Relay
- (2) Protection module
- (3) Maintaining clamp
- (4) Legend

Socket with Relay and Plastic Maintaining Clamp



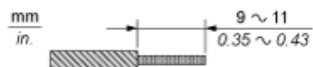
- (1) Relay
- (2) Protection module
- (3) Maintaining clamp
- (4) Legend

Wiring Diagram

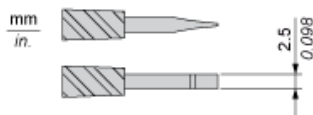


Wiring Recommendations

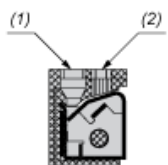
Exposed Conductor Length



Flat-Blade, Parallel-tip, 2.5 mm diameter



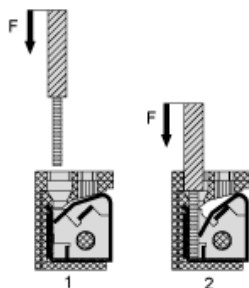
Cable Hole and Tool Hole



- (1) Cable Hole
- (2) Tool Hole

Installation and Uninstallation

Installation : Push In (Insert cable)



Uninstallation : Pull Out (Remove cable)

