

Rittal – The System.

Faster – better – everywhere.

► Component shelf 2 U, static installation – DK 7119.400

Date : Mar 14, 2018

ENCLOSURES

POWER DISTRIBUTION

CLIMATE CONTROL

IT INFRASTRUCTURE

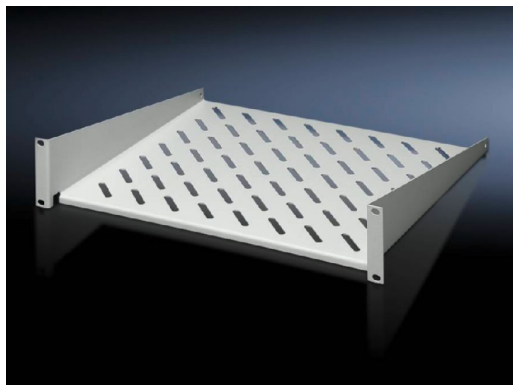
SOFTWARE & SERVICES

FRIEDHELM LOH GROUP



Component shelf 2 U, static installation – DK 7119.400

created: 14.03.2018 on www.rittal.com/com-en



Product description

Design: 482.6 mm (19")

Description: For mounting between 482.6 mm (19") mounting angles.

Applications: For mounting between 482.6 mm (19") mounting angles.

Material: Sheet steel

Surface finish: Spray-finished

Colour: RAL 7035

Note: Not suitable for combination with telescopic slides.

Product features

Dimensions: Width: 482.6 mm
Width: 19"
Depth: 400 mm

Units: 2 U

Load capacity: 25 kg surface load, static

Packs of: 1 pc(s).

Weight/pack: 3.39 kg

EAN:	4028177187214
Customs tariff number:	94039010
ETIM 6.0:	EC002620
ETIM 5.0:	EC002620
eCl@ss 8.0/8.1:	27189261
eCl@ss 7.0/7.1:	27189261
eCl@ss 6.0/6.1:	27189261
eCl@ss 5.1/5.1.4:	27189218
Product description (long):	DK Component shelf, WHD: 482,6x2 Ux400 mm, 25 kg, static, distance between levels:, static installation, For 482.6 mm (19") system punchings, RAL 7035