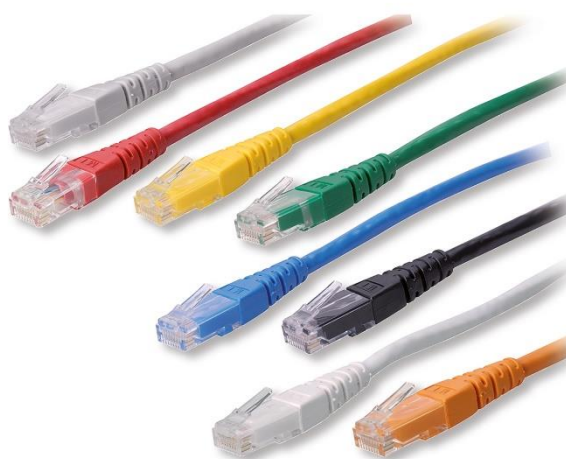


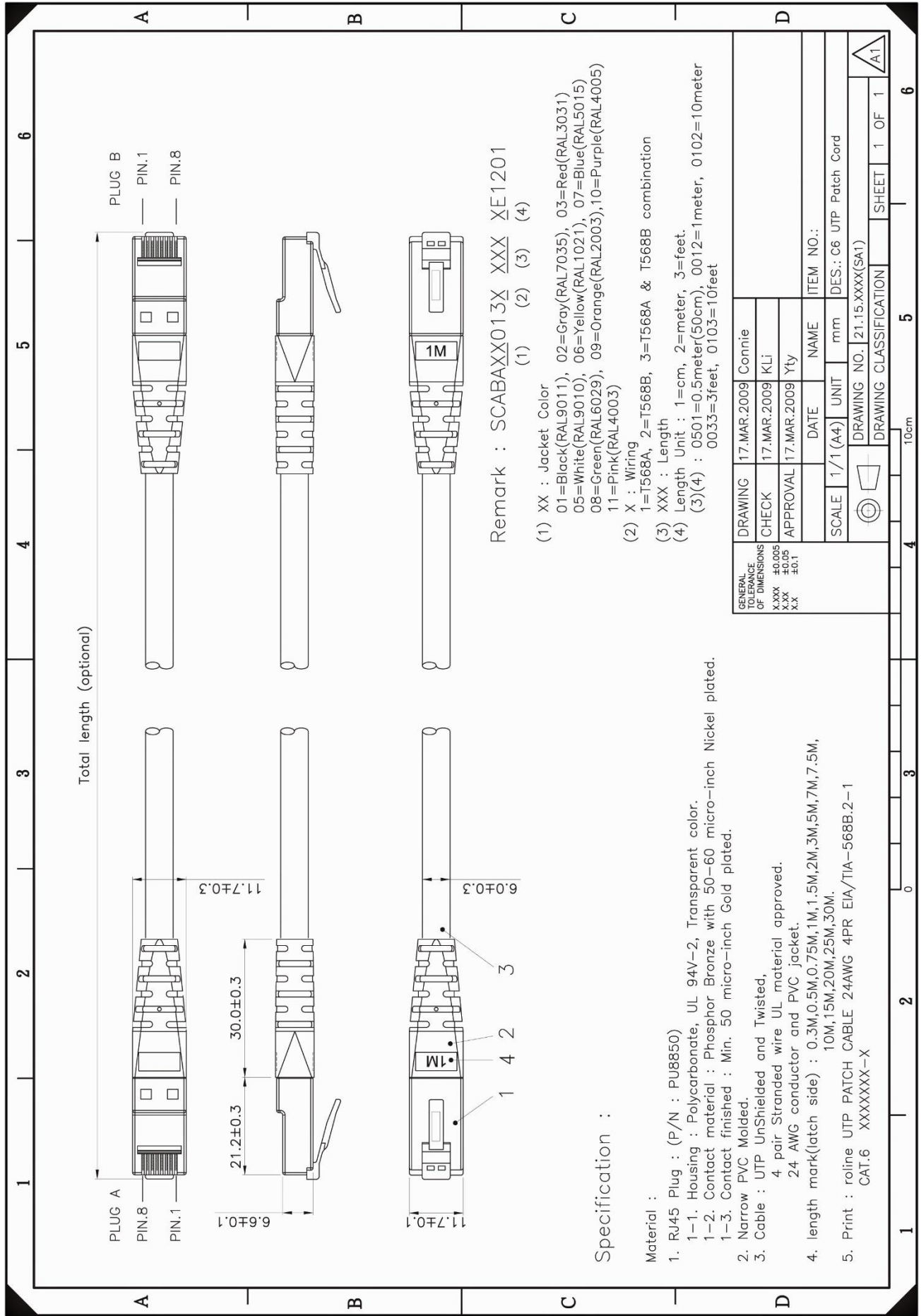
ROLINE Patchcord Cat.6 UTP



Description	<p>Patch cable for networking connections between devices. Prepared unshielded Twisted Pair cable with RJ-45 connectors on both ends. Durable due to moulded kink protection Flexible cable, suitable for narrow bending High quality plugs with gold plated contacts Contact settings 1:1, in accordance with the EIA/TIA 568 standard Construction: 4-pair stranded copper wire Standard: Cat6 / Class E Cover material PVC no LSOH Length indication on the sleeve 2-year guarantee stand for performance promise</p>
Shield type	Unshielded Twisted Pair
Impedance	100 Ohm
Transfer quality	Cat6 /Class E
Cross selection	4P AWG24 EIA/TIA-568B.2-1

Article No RJ45 patch cord Cat.6 unshielded, wiring 1:1

Length	grey	red	yellow	green	blue	black	white	orange
0.3 m	21.15.1510	21.15.1511	21.15.1512	21.15.1513	21.15.1514	21.15.1515	21.15.1516	21.15.1517
0.5 m	21.15.0930	21.15.1521	21.15.1522	21.15.1523	21.15.1524	21.15.1525	21.15.1526	21.15.1527
1.0 m	21.15.0931	21.15.1531	21.15.1532	21.15.1533	21.15.1534	21.15.1535	21.15.1536	21.15.1537
1.5 m	21.15.0923	21.15.0924	21.15.0925	21.15.0926	21.15.0927	21.15.0928	21.15.0929	21.15.0921
2.0 m	21.15.0932	21.15.1541	21.15.1542	21.15.1543	21.15.1544	21.15.1545	21.15.1546	21.15.1547
3.0 m	21.15.0933	21.15.1551	21.15.1552	21.15.1553	21.15.1554	21.15.1555	21.15.1556	21.15.1557
5.0 m	21.15.0935	21.15.1561	21.15.1562	21.15.1563	21.15.1564	21.15.1565	21.15.1566	21.15.1567
7.0 m	21.15.0937	21.15.1571	21.15.1572	21.15.1573	21.15.1574	21.15.1575	21.15.1576	21.15.1577
10 m	21.15.0940	21.15.1581	21.15.1582	21.15.1583	21.15.1584	21.15.1585	21.15.1586	21.15.1587
15 m	21.15.0945	21.15.1591	21.15.1592	21.15.1593	21.15.1594	21.15.1595	21.15.1596	21.15.1597
20 m	21.15.0950	21.15.1601	21.15.1602	21.15.1603	21.15.1604	21.15.1605	21.15.1606	21.15.1607



Remark : SCABAXX013X XXX XE1201

- (1) XX : Jacket Color
 - 01=Black(RAL9011), 02=Gray(RAL7035), 03=Red(RAL3031)
 - 05=White(RAL9010), 06=Yellow(RAL1021), 07=Blue(RAL5015)
 - 08=Green(RAL6029), 09=Orange(RAL2003), 10=Purple(RAL4005)
 - 11=Pink(RAL4003)
- (2) X : Wiring
 - 1=T568A, 2=T568B, 3=T568A & T568B combination
- (3) XXX : Length
- (4) Length Unit : 1=cm, 2=meter, 3=feet.
 - (3)(4) : 0501=0.5meter(50cm), 0012=1meter, 0102=10meter
 - 0033=3feet, 0103=10feet

Specification :

- Material :
- 1. RJ45 Plug : (P/N : PU8850)
 - 1-1. Housing : Polycarbonate, UL 94V-2, Transparent color.
 - 1-2. Contact material : Phosphor Bronze with 50-60 micro-inch Nickel plated.
 - 1-3. Contact finished : Min. 50 micro-inch Gold plated.
- 2. Narrow PVC Molded.
- 3. Cable : UTP UnShielded and Twisted,
 - 4 pair Stranded wire UL material approved.
 - 24 AWG conductor and PVC jacket.
- 4. length mark(latch side) : 0.3M,0.5M,0.75M,1M,1.5M,2M,3M,5M,7M,7.5M, 10M,15M,20M,25M,30M.
- 5. Print : roline UTP PATCH CABLE 24AWG 4PR EIA/TIA-568B.2-1
CAT.6 XXXXXXX-X

GENERAL TOLERANCE OF DIMENSIONS X.XXX ±0.005 X.XX ±0.05 X.X ±0.1	DRAWING	17.MAR.2009	Connie
	CHECK	17.MAR.2009	KLj
	APPROVAL	17.MAR.2009	Yty
SCALE	1/1 (A4)	UNIT	mm
		DATE	NAME
		ITEM NO.:	
		DES.: C6 UTP Patch Cord	
		DRAWING NO. 21.15.XXXX(SA1)	
		DRAWING CLASSIFICATION	
		SHEET 1 OF 1	