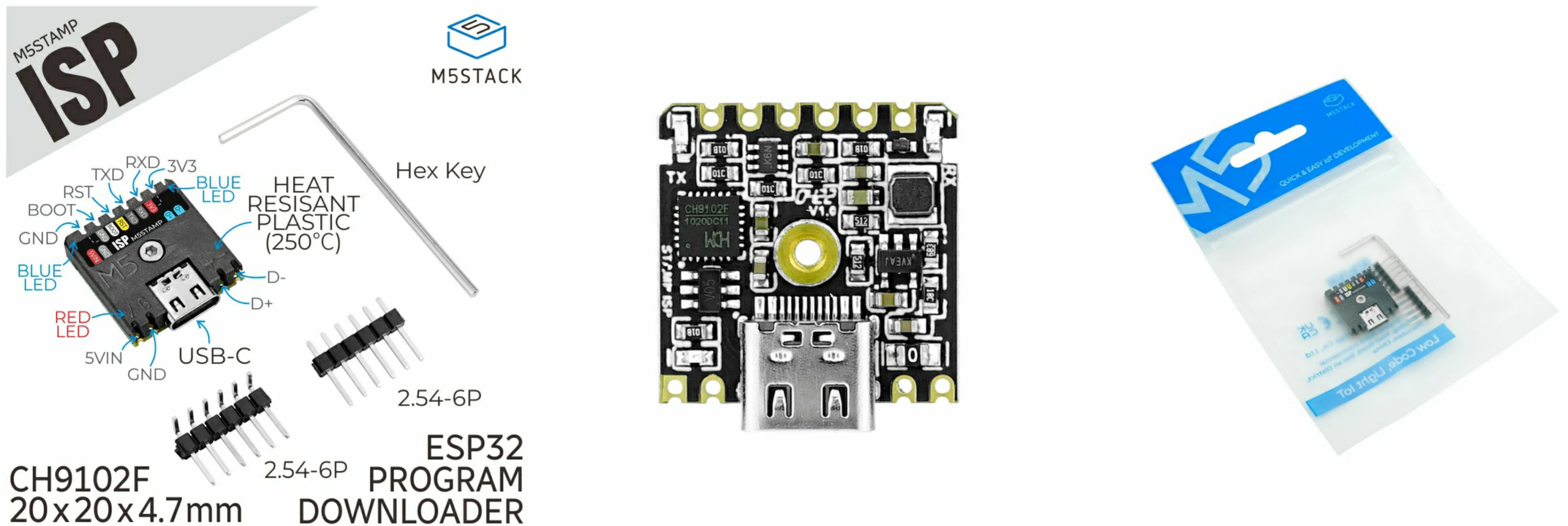


# StampISP

SKU:S006



## Description

StampISP is an ESP32 programming tool with USB to serial port in STAMP series package, using CH9102 chip inside, and built-in 3.3V DCDC circuit, 5V power supply and USB D+/D- signal line led out on the side of the PCB. It adopts STAMP package and can support SMD, DIP, flying wire and other uses. This product can be used for ESP32 circuit download, embedded part of product ISP function, etc.

## Features

- Full speed USB device interface, USB 2.0 compatible, Type C interface.
- Hardware full duplex serial UART interface
- supports communication baud rate varies from 50bps to 4Mbps.
- 3.3V OUTPUT
- $\pm 8\text{kV}$  ESD protection
- Program download indicator (red/blue)

## Includes

- 1\*Stamp ISP
- 1x 1.5mm hex key
- 1 × 2.54-6P Curved needles
- 1 × 2.54-6P Inline needles



# Applications

- ESP32/ESP8266 program download
- Other serial port communication

# Specification

Resources	Parameters
USB communication chip	CH9102F
Step-down DCDC power supply chip	SY8089
USB interface type	Type C
Output voltage	3.3V
ESD protect	±8kV
Product Size	20mm × 20mm × 4.7mm
Package Size	136mm × 92mm × 13mm
Product Weight	2.9g
Package Weight	6.8g

