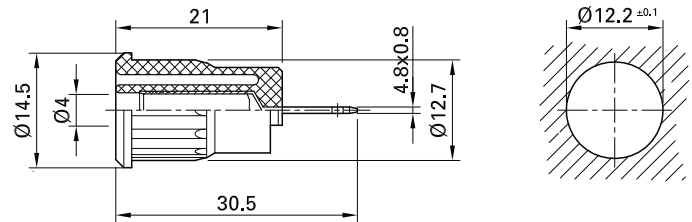



## Press-in socket SEB4-F/A

Insulated, rigid, Ø 4 mm, accepting spring-loaded Ø 4 mm plugs with rigid insulating sleeve. Brass sheet. The socket is

pressed into pre-drilled panels of plastic, metal, etc.

**Connection: Flat connecting tab 4.8 mm × 0.8 mm**, can be bent to 90°, once only.



Order No.	Type	Rated voltage/current		*Standard colors										
23.3160-*	SEB4-F/A	1000 V, CAT III / 24 A	Ni c  us	<table border="1"> <tr> <td>20</td><td>21</td><td>22</td><td>23</td><td>24</td> </tr> <tr> <td>25</td><td>29</td><td></td><td></td><td></td> </tr> </table>	20	21	22	23	24	25	29			
20	21	22	23	24										
25	29													



**Assembly instructions MA104**

[www.staubli.com/electrical](http://www.staubli.com/electrical)



**Flat connecting receptacles FSH4,8x0,8, page 170**

**Press-in tool MB4-S, page 171**



Optional colors **27 28**

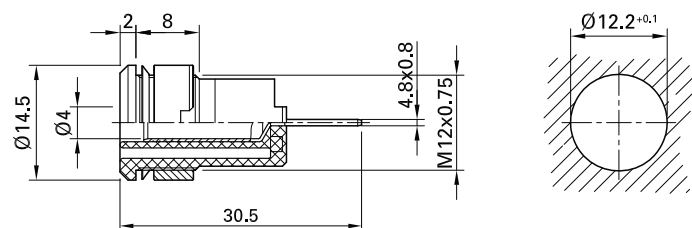
Further information, page 6


## Panel-mount socket SLB4-F/A

Insulated, rigid, Ø 4 mm, accepting spring-loaded Ø 4 mm plugs with rigid insulating sleeve. Brass sheet. The socket is

screwed into pre-drilled panels of plastic, metal, etc.

**Connection: Flat connecting tab 4.8 mm × 0.8 mm**, can be bent to 90°, once only.



Order No.	Type	Rated voltage/current		*Standard colors										
23.3070-*	SLB4-F/A	1000 V, CAT III / 24 A	Ni c  us	<table border="1"> <tr> <td>20</td><td>21</td><td>22</td><td>23</td><td>24</td> </tr> <tr> <td>25</td><td>26</td><td>29</td><td></td><td></td> </tr> </table>	20	21	22	23	24	25	26	29		
20	21	22	23	24										
25	26	29												

### Supplied assembly material

Page 167	MUR/M12x0,75	Round nut
Page 167	SSP4	Washer



**Assembly instructions MA152**

[www.staubli.com/electrical](http://www.staubli.com/electrical)



**Flat connecting receptacles FSH4,8x0,8, page 170**

**Tube spanners SS2, SS425, page 170**



Optional colors **27 28**

Further information, page 6