

## Category 6 24 Port 0.5U UTP Coupler Panel



### **Category 6 24 Port 0.5U UTP Coupler Panel (SFACK24-0.5)**

TUK's high density horizontal Category 6 0.5U UTP patch panel offers high performance in a compact package.

#### **Features**

- High performance, comfortably accommodates Category 5e and 6 signalling
- Compliant with IEC60512-99-001 – suitable for use with IEEE 802.3at (PoE+) applications
- Clear numbering on the front provides a quick, easy way to identify cable run
- Supplied with a removeable rear cable management bar and 2 sets of M6 black cage nuts
- High gold plating on contacts accommodates multiple re-patching

#### **Specifications**

- Weight: 609g approx.
- Dimensions: 505mm x 162mm x 30mm (W x D x H) approx. in primary packaging
- Colour:
  - front: black
  - rear: silver
- Material:
  - Panel: cold-rolled steel with ABS plastic facia
  - Rear of panel and cable management: nickel plated
  - Contacts: 50 $\mu$ "/1.27 $\mu$ m gold plating over nickel over phosphor bronze
  - Keystone housing: ABS UL94V-0

**Packaging:** Supplied assembled in an individual carton

**EAN:** 5055386511348

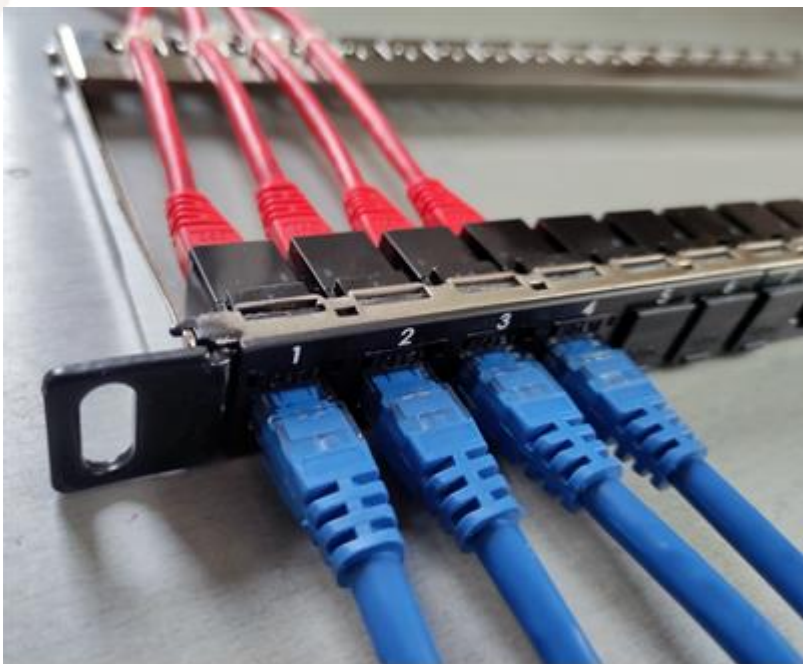
**Commodity Code:** 85177090

**Country of Origin:** China

For further information on components, please see links below:

SACK4Bk <https://tuk.co.uk/product/category-6-compact-keystone-mount-coupler/>

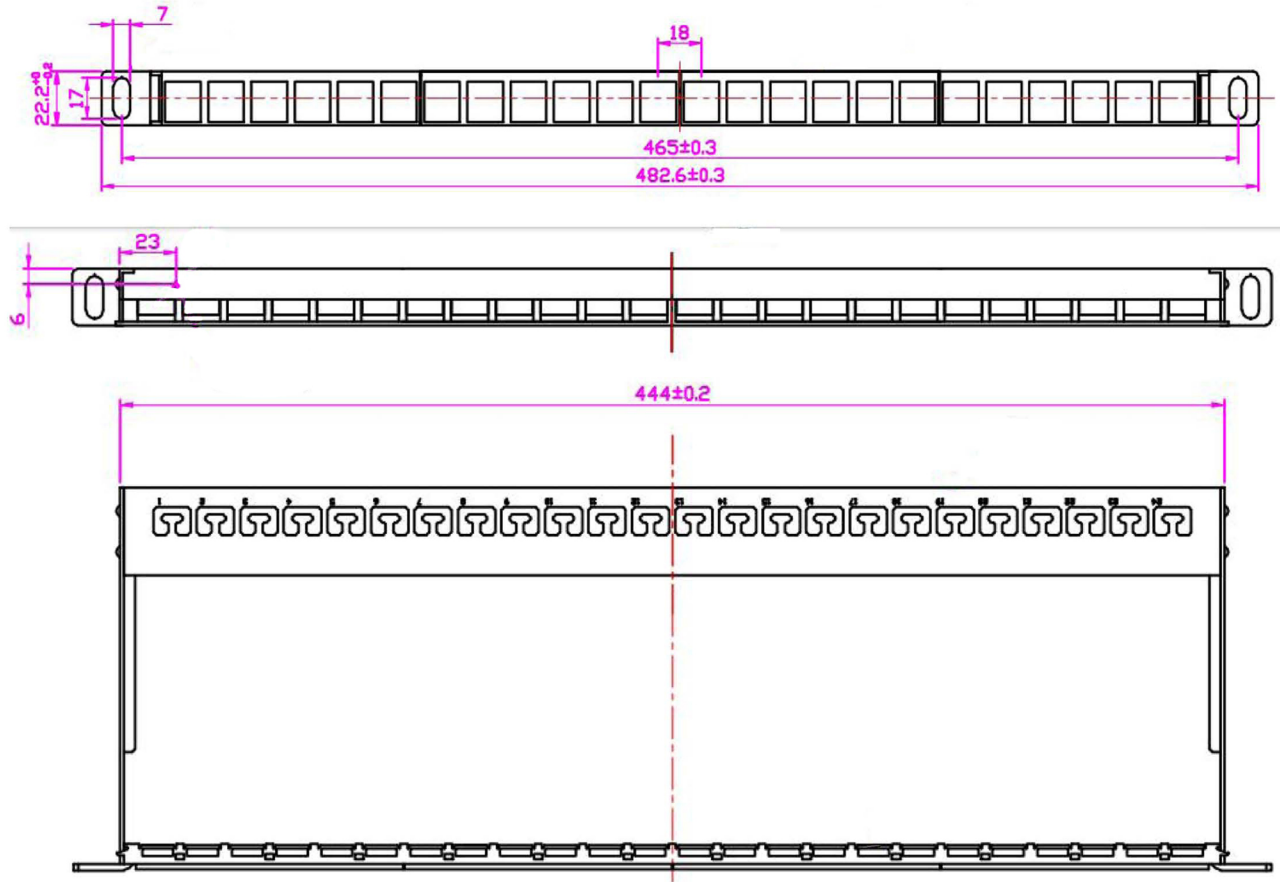
FFK24mt0.5pt <https://tuk.co.uk/product/0-5u-24-port-unpopulated-keystone-panel/>



**Illustrative image**

ROHS Compliant

Code: SFACK24-0.5pt



Panel fitted with 24 couplers

