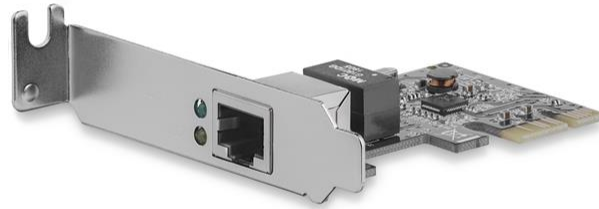


## 1 Port PCI Express PCIe Gigabit NIC Server Adapter Network Card - Low Profile

**Product ID:** ST1000SPEX2L



The ST1000SPEX2L Low-Profile PCIe Gigabit Network Card adds a 10/100/1000 Mbps compatible RJ45 Ethernet port to a PCI Express-enabled client, server or workstation, providing a convenient addition or replacement networking interface.

Compliant with IEEE 802.3/u/ab standards, and with support for 9K Jumbo Frames, VLAN tagging and Wake on LAN (WOL), this versatile Gigabit NIC/Server Adapter offers effective network performance.

The card comes pre-configured with a low-profile/half-height installation bracket and includes a standard profile bracket for installation in a wide range of computer/server chassis, regardless of form factor.

Backed by a 2-year StarTech.com warranty and free lifetime technical support.

## Certifications, Reports and Compatibility

### Applications

- Upgrade from 10/100 Ethernet capability to Gigabit capability
- Add an Ethernet port to a workstation or server computer, for redundancy or bridging
- Add networking capabilities to an old system with no Ethernet port

### Features

- A single 10/100/1000Mbps compatible RJ45 Ethernet port
- Gigabit detection and Link/Activity LED indicators

- Fully Compliant with IEEE 802.3, IEEE 802.3u, IEEE 802.3x and IEEE 802.3ab standards
- Supports IEEE 802.1Q VLAN tagging, IEEE 802.1P Layer 2 Priority Encoding and IEEE 802.3x Full Duplex Flow Control
- Jumbo frame support
- Full and half duplex support
- Supports Wake-on-LAN function
- Crossover Detection & Auto-Correction (Auto MDI/MDI-X)

---

#### Hardware

Warranty	2 Years
Ports	1
Interface	RJ45 (Gigabit Ethernet)
Bus Type	PCI Express
Card Type	Low Profile (SP bracket incl.)
Industry Standards	IEEE 802.3, IEEE 802.3u, IEEE 802.3x, IEEE 802.3ab
Chipset ID	Realtek - RTL8111H

---

#### Performance

Maximum Data Transfer Rate	1000 Mbps
Compatible Networks	10/100/1000 Mbps
Auto MDIX	Yes
Full Duplex Support	Yes
Jumbo Frame Support	9K max.
Supported Protocols	CSMA/CD

---

#### Connector(s)

Connector Type(s)	PCI Express x1
External Ports	RJ-45

---

#### Software



OS Compatibility	Windows 2000, XP, Vista, 7, 8, 8.1, 10 Windows Server 2003, 2008 R2, 2012, 2012 R2, 2016, 2019 Mac OS X 10.6 to 10.9, Linux 2.4.x to 4.11.x <i>LTS Versions Only</i>
------------------	--

---

**Special Notes / Requirements**

System and Cable Requirements	Available PCI Express expansion card slot
-------------------------------	---

---

**Indicators**

LED Indicators	Gigabit Detect (Yellow) Link/Activity (Green)
----------------	--

---

**Environmental**

Operating Temperature	0C to 70C (32F to 158F)
Storage Temperature	0C to 100C (32F to 212F)
Humidity	10% ~ 90% RH

---

**Physical Characteristics**

Material	Steel
Product Length	2.8 in [70 mm]
Product Width	0.7 in [18 mm]
Product Height	1.9 in [49 mm]
Weight of Product	1.0 oz [27 g]

---

**Packaging Information**

Package Length	5.7 in [14.4 cm]
Package Width	6.8 in [17.3 cm]
Package Height	1.2 in [31 mm]
Shipping (Package) Weight	4.4 oz [125 g]

---

**What's in the Box**



Included in Package	Gigabit Ethernet PCI Express Card
	Standard Profile Bracket
	Instruction Manual

---

***\*Product appearance and specifications are subject to change without notice.***

