

Enclosure for command devices, 22 mm, round, Enclosure material plastic, enclosure top part gray, 1 control point plastic, Recess for label, A=Pushbutton green, label: I, 1 NO, screw terminal, floor mounting, Label enclosed



|                                      |   |
|--------------------------------------|---|
| <b>Product brand name</b>            | SIRIUS ACT  |
| <b>Product designation</b>           | Enclosures  |
| <b>Product type designation</b>      | 3SU1  |
| <b>Manufacturer's article number</b> | <ul style="list-style-type: none"> <li>• of supplied contact module<br/>A2 = 3SU1400-2AA10-1BA0<br/><a href="#">3SU1400-2AA10-1BA0</a></li> <li>• of supplied contact module at the command point A 2</li> <li>• of the supplied holder<br/>A = 3SU1500-0AA10-0AA0<br/><a href="#">3SU1500-0AA10-0AA0</a></li> <li>• of the supplied holder at the command point A</li> <li>• of the supplied actuator<br/><a href="#">3SU1000-0AB40-0AA0</a></li> <li>• of the supplied actuator at the command point A<br/><a href="#">3SU1000-0AB40-0AA0</a></li> <li>• of supplied empty enclosure<br/><a href="#">3SU1801-0AA00-0AB1</a></li> <li>• of supplied accessory<br/>A = 3SU1900-0AF16-0QB0<br/><a href="#">3SU1900-0AF16-0QB0</a></li> <li>• of the supplied accessories at the command point A</li> </ul> |

|                                     |                       |
|-------------------------------------|-----------------------|
| <b>Enclosure</b>                    |                       |
| <b>Design of the housing</b>        | with recess for label |
| <b>Shape of the enclosure front</b> | Square                |

|                                       |          |
|---------------------------------------|----------|
| <b>Material of the enclosure</b>      | plastic  |
| <b>Number of command points</b>       | 1        |
| <b>Product component</b>              |          |
| • EMERGENCY STOP device               | No       |
| • protective collar                   | No       |
| <b>Color</b>                          |          |
| • of top part of the enclosure        | grey     |
| <b>Delivery state</b>                 |          |
| • as a kit                            | No       |
| • pre-wired on strip terminal         | No       |
| <b>Mounting type of the enclosure</b> | Vertical |

### Actuator

|  |            |
|--|------------|
| <b>Design of the operating mechanism</b>       | Pushbutton |
| Suitability for use EMERGENCY OFF switch       | No         |
| <b>Product feature</b>                         |            |
| • lockout                                      | No         |
| <b>Product extension optional Light source</b> | No         |
| <b>Color</b>                                   |            |
| • of the actuating element                     | green      |
| <b>Material of the actuating element</b>       | plastic    |
| <b>Shape of the actuating element</b>          | round      |
| <b>Number of contact modules</b>               | 1          |

### Front ring

|                                     |          |
|-------------------------------------|----------|
| <b>Product component front ring</b> | Yes      |
| <b>Design of the front ring</b>     | Standard |
| <b>Material of the front ring</b>   | plastic  |
| <b>Color of the front ring</b>      | black    |

### Holder

|                               |         |
|-------------------------------|---------|
| <b>Material of the holder</b> | Plastic |
|-------------------------------|---------|

### Display

|                              |   |
|------------------------------|---|
| <b>Number of LED modules</b> | 0 |
|------------------------------|---|

### General technical data

|   |                                   |
|---|-----------------------------------|
| <b>Product function</b>                         |                                   |
| • positive opening                              | No                                |
| • EMERGENCY OFF function                        | No                                |
| • EMERGENCY STOP function                       | No                                |
| <b>Protection class IP</b>                      | IP66, IP67, IP69(IP69K)           |
| <b>Degree of protection NEMA rating</b>         | NEMA 1, 2, 3, 3R, 4, 4X, 12K, 13  |
| <b>Shock resistance</b>                         |                                   |
| • acc. to IEC 60068-2-27                        | Sinusoidal half-wave 50 g / 11 ms |
| • for railway applications acc. to DIN EN 61373 | Category 1, Class B               |

|   |  |
|---|--|
| <b>Vibration resistance</b>   |  |
| <ul style="list-style-type: none"> <li>• acc. to IEC 60068-2-6</li> <li>• for railway applications acc. to DIN EN 61373</li> </ul>  | 10 ... 500 Hz: 5g<br>Category 1, Class B             |
| <b>Reference code acc. to DIN EN 81346-2</b>  | S  |
| <b>Reference code acc. to DIN EN 61346-2</b>  | S  |
| <b>Continuous current of the C characteristic MCB</b>   | 10 A; for a short-circuit current smaller than 400 A |
| <b>Continuous current of the quick DIAZED fuse link</b>   | 10 A   |
| <b>Continuous current of the DIAZED fuse link gG</b>  | 10 A   |
| <b>Operating voltage</b>  |  |
| <ul style="list-style-type: none"> <li>• at AC               <ul style="list-style-type: none"> <li>— at 50 Hz rated value</li> <li>— at 60 Hz rated value</li> </ul> </li> <li>• at DC               <ul style="list-style-type: none"> <li>— rated value</li> </ul> </li> </ul> | 5 ... 500 V<br>5 ... 500 V<br>5 ... 500 V            |

|   |              |
|---|--------------|
| <b>Auxiliary circuit</b>                            |              |
| <b>Design of the contact of auxiliary contacts</b>  | Silver alloy |
| <b>Number of NC contacts for auxiliary contacts</b> | 0            |
| <b>Number of NO contacts for auxiliary contacts</b> | 1            |

|  |   |
|--|---|
| <b>Connections/ Terminals</b>  |   |
| <b>Type of electrical connection</b>   |   |
| <ul style="list-style-type: none"> <li>• of modules and accessories</li> </ul> | Screw-type terminal                         |
| <b>Type of electrical connection on enclosure</b>                              | Cable routing above and below, both 1 x M20 |
| <b>Tightening torque of the screws in the bracket</b>                          | 1 ... 1.2 N·m                               |
| <b>Tightening torque of mounting screws in the enclosure cover</b>             | 1.5 ... 1.7 N·m                             |
| <b>Tightening torque</b>   |   |
| <ul style="list-style-type: none"> <li>• with screw-type terminals</li> </ul>  | 0.8 ... 0.9 N·m                             |

|   |         |
|---|---------|
| <b>Interfaces</b>   |         |
| <b>Design of the interface</b>  |         |
| <ul style="list-style-type: none"> <li>• for communication</li> </ul> | without |

|  |  |
|--|--|
| <b>Ambient conditions</b>  |  |
| <b>Ambient temperature</b>   |  |
| <ul style="list-style-type: none"> <li>• during operation</li> <li>• during storage</li> </ul> | -25 ... +70 °C<br>-40 ... +80 °C   |
| Environmental category during operation acc. to IEC 60721                                      | 3M6, 3S2, 3B2, 3C3, 3K6 (with relative air humidity of 10 ... 95 %, no condensation in operation permitted for all devices behind front panel) |

|  |                |
|--|----------------|
| <b>Installation/ mounting/ dimensions</b>                                      |                |
| <b>Mounting type</b>   |                |
| <ul style="list-style-type: none"> <li>• of modules and accessories</li> </ul> | Floor mounting |
| <b>Height</b>  | 85 mm          |

|                                   |       |
|-----------------------------------|-------|
| Width                             | 85 mm |
| Depth                             | 75 mm |
| Shape of the installation opening | round |

### Accessories

|   |           |
|---|-----------|
| Number of labels                              | 1         |
| Marking of the name plate for command devices | A = I     |
| Color of the label                            | A = black |
| Number of inscription plates                  | 0         |

### Certificates/ approvals

|                          |                           |
|--------------------------|---------------------------|
| General Product Approval | Declaration of Conformity |
|--------------------------|---------------------------|



|                           |                   |                   |
|---------------------------|-------------------|-------------------|
| Declaration of Conformity | Test Certificates | Marine / Shipping |
|---------------------------|-------------------|-------------------|

[Miscellaneous](#)

[Type Test Certificates/Test Report](#)

[Special Test Certificate](#)



|                   |       |
|-------------------|-------|
| Marine / Shipping | other |
|-------------------|-------|



[Confirmation](#)

### Further information

Information- and Downloadcenter (Catalogs, Brochures,...)

[www.siemens.com/ic10](http://www.siemens.com/ic10)

Industry Mall (Online ordering system)

<https://mall.industry.siemens.com/mall/en/en/Catalog/product?mlfb=3SU1801-0AB00-2AB1>

Cax online generator

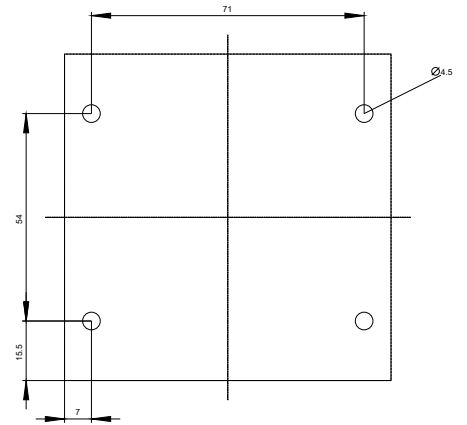
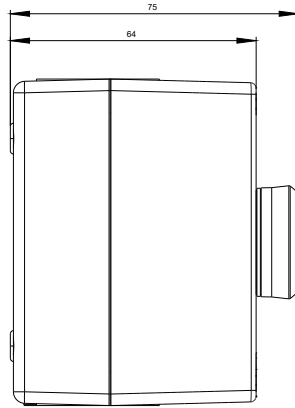
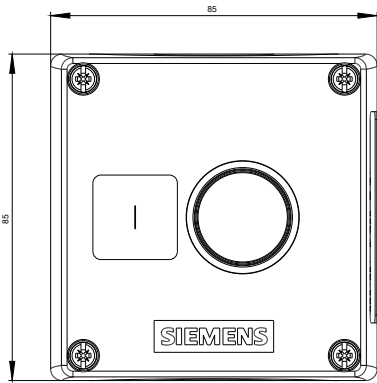
<http://support.automation.siemens.com/WW/CAXorder/default.aspx?lang=en&mlfb=3SU1801-0AB00-2AB1>

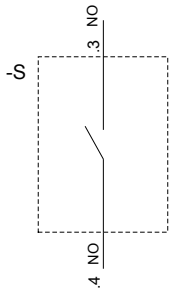
Service&Support (Manuals, Certificates, Characteristics, FAQs,...)

<https://support.industry.siemens.com/cs/ww/en/ps/3SU1801-0AB00-2AB1>

Image database (product images, 2D dimension drawings, 3D models, device circuit diagrams, EPLAN macros, ...)

[http://www.automation.siemens.com/bilddb/cax\\_de.aspx?mlfb=3SU1801-0AB00-2AB1&lang=en](http://www.automation.siemens.com/bilddb/cax_de.aspx?mlfb=3SU1801-0AB00-2AB1&lang=en)





SIEMENS

3SU18.1.(AB,AD)0\_01\_4\_IEC\_V.DXF

Format / Size: Hybrid quer

last modified:

12/18/2019