



Main

Range of product	Modicon M171
Product or component type	Communication module
Communication port protocol	RS485 BACnet MS/TP Modbus RTU

Complementary

Integrated connection type	RS485 wire crimp - twisted pair
Adjustment	Pitch 3.81 mm
Electrical connection	Removable screw terminal block
Physical interface	90° insertion - 2.5 mm ² cable
Supply	Via base board EVD/EVC
Product compatibility	Logic controller M172 performance Logic controller M171 performance
Net weight	0.077 kg

Environment

Product certifications	CURus CSA EAC CE
Marking	CE
IP degree of protection	IP20
Ambient air temperature for operation	-10...55 °C
Ambient air temperature for storage	-20...85 °C
Relative humidity	10...90 % without condensation

Packing Units

Unit Type of Package 1	PCE
Number of Units in Package 1	1
Package 1 Weight	181.0 g
Package 1 Height	13.0 cm
Package 1 width	9.1 cm
Package 1 Length	18.5 cm
Unit Type of Package 2	S02
Number of Units in Package 2	6
Package 2 Weight	1.342 kg
Package 2 Height	15.0 cm
Package 2 width	30.0 cm
Package 2 Length	40.0 cm

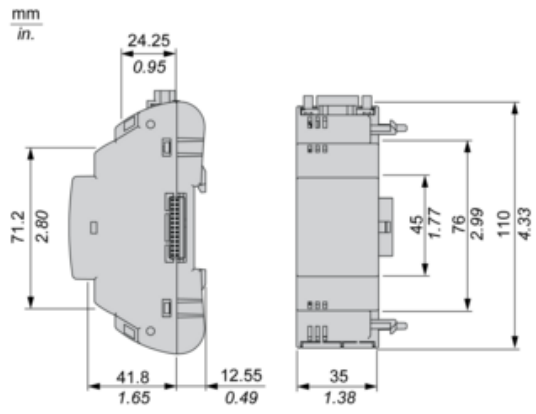
Offer Sustainability

REACH Regulation	REACH Declaration
REACH free of SVHC	Yes
EU RoHS Directive	Pro-active compliance (Product out of EU RoHS legal scope) EU RoHS Declaration
Mercury free	Yes
RoHS exemption information	Yes
China RoHS Regulation	China RoHS Declaration
WEEE	The product must be disposed on European Union markets following specific waste collection and never end up in rubbish bins

Contractual warranty

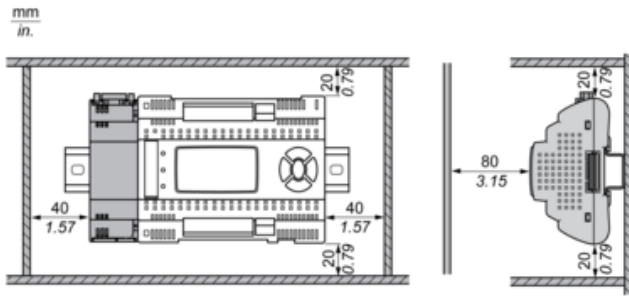
Warranty	18 months
----------	-----------

Dimensions

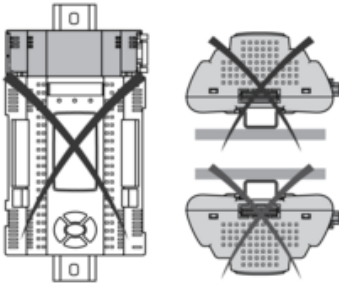


Mounting and Clearance

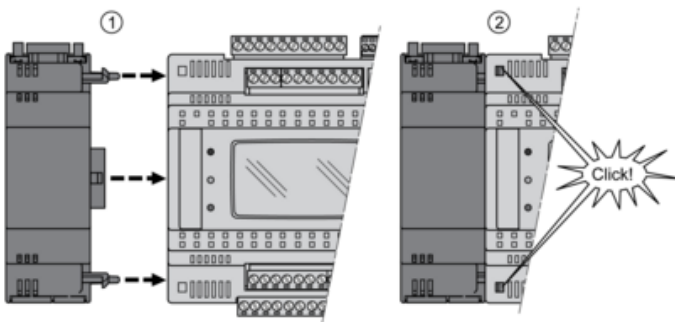
Clearance



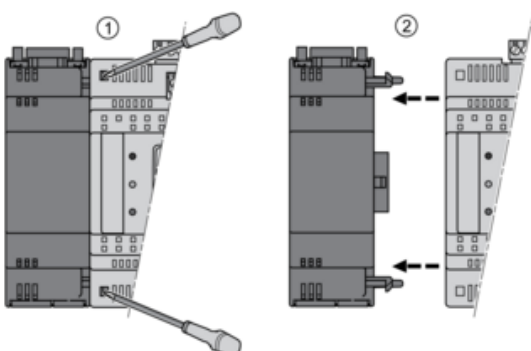
Misplacement



Mounting on Controller



Dismounting



Connections and Schema

RS 485 Communication Module
TM171ARS485

