

TPK-59

flexible wire probe 4 mm plug

- with 4 mm plug (clearance 19 mm)
- Probe length approx. 0.9 m

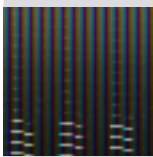
K
Typ

K-type temperature sensor

Temperature range -46 °C...+316 °C
Accuracy ±1.5 °C

Ordering Information

Model: TPK-59 · Article no.: 2733660



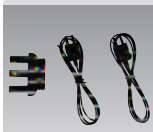
TPK-60

temperature probe

- 2.5 mm jack plug
- Fits the TR100-A and TR200-A
- Cable length 115 mm
- Temperature range (see TR200-A on page 86)

Ordering Information

Model: TPK-60 · Article no.: 3503184



TPK-62

2 x temperature probes with adapter

- 4 mm jacks, connection for K-type probe
- Suitable for AM-540-EUR and AMP-550-EUR
- Temperature range (see AM-540-EUR/AM-550-EUR on page 35)

K
Typ

Ordering Information

Model: TPK-62 · Article no.: 4160703



TM-SWA

Data Logging Software and RS232 Cable for TMA10A

- Real-time software logs and displays data from all measurement functions
- Record two channels simultaneously
- Air Flow and Temperature with TMA10 device
- Save results for subsequent analysis
- Automatic calculation of results including maximum, minimum, average, and standard deviation

Ordering Information

Model: TM-SWA · Article no.: 3027085



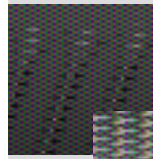
1032

Heat-conducting paste

- Heat-conducting paste up to 250 °C (30 g)
- Contains silicone

Ordering Information

Model: 1032 · Article no.: 2145689



Type 101

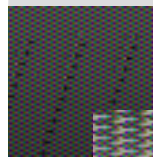
K-type surface probe

Temperature range -50 °C...+450 °C
Response time approx. 5.5 s (63.2 % of final temperature value)
Accuracy ±1.5 °C
Connection cable approx. 500 mm spiral cable
Dimensions 130 x 4 mm
Weight approx. 115 g

K
Typ

Ordering Information

Model: 5795 · Article no.: 2147199



Type 104

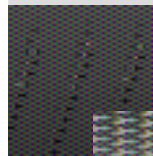
K-type liquid sensor

Temperature range -50 °C...+1100 °C
Response time approx. 12.0 s (63.2 % of final temperature value)
Accuracy ±1.5 °C (from 400 °C, 0.48 % rdg.)
Connection cable approx. 500 mm spiral cable
Dimensions 130 x 3 mm
Weight approx. 105 g

K
Typ

Ordering Information

Model: 5794 · Article no.: 2147186



Type 106

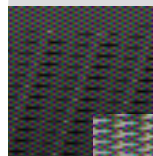
K-type immersion probe

Temperature range -50 °C...+600 °C
Response time approx. 12.0 s (63.2 % of final temperature value)
Accuracy ±1.5 °C (from 400 °C, 0.48 % rdg.)
Connection cable approx. 500 mm spiral cable
Dimensions 130 x 3 mm
Weight approx. 105 g

K
Typ

Ordering Information

Model: 5793 · Article no.: 3313234



Type 110

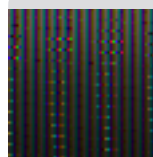
K-type fast response surface probe

Temperature range -50 °C...+900 °C
Response time approx. 2.3 s (63.2 % of final temperature value)
Accuracy ±1.5 °C (from 400 °C, 0.48 % rdg.)
Connection cable approx. 500 mm spiral cable
Dimensions 130 x 8 mm
Weight approx. 112 g

K
Typ

Ordering Information

Model: 5797 · Article no.: 3313241



Type 111

K-type flexible wire probe

Temperature range -50 °C...+400 °C
Response time approx. 5.0 s (63.2 % of final temperature value)
Accuracy ±1.5 °C
Dimensions 1000 x 2 mm
Weight approx. 22 g

K
Typ

Ordering Information

Model: 5790 · Article no.: 3313229