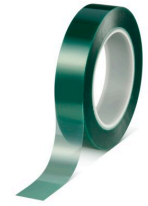




tesa® 50600

Product Information



PET Masking Tape 220°C with Silicone Adhesive

Product Description

tesa® 50600 is a green-translucent, high-temperature masking tape featuring a polyester backing with a silicone adhesive. tesa® 50600 is used for various applications, especially for masking during powder-coating processes, surface protection applications or bonding and splicing of non-polar materials. tesa® 50600 masking tape is also available in a version with a liner.

Product Features

- tesa® 50600 is also available on a special 50 µm thick PET liner (50600 PV1)
- Residue-free removability for masking and surface protection applications
- The high-temperature tape features easy application and easy one-piece removal without leaving residues behind
- The tape enables sharp color edges and offers excellent paint anchorage.
- The masking tape's silicone adhesive system makes the tape extremely heat-resistant, withstanding extreme temperatures of up to 220°C for as long as 30 minutes at a time.

Application Fields

- tesa® 50600 is ideally suited for masking off areas that are to be protected during powder-coating processes
- The high-temperature tape can withstand temperatures of up to 220°C for 30 minutes
- tesa® 50600 is used for surface protection applications or bonding and splicing of non-polar materials
- The masking tape features residue-free removal

Technical Information (average values)

The values in this section should be considered representative or typical only and should not be used for specification purposes.

Product Construction

- | | | | |
|--------------------|----------|-------------------|-------|
| • Backing material | PET | • Total thickness | 80 µm |
| • Type of adhesive | silicone | | |

Properties/Performance Values

- | | | | |
|-----------------------------------|---------|--------------------------------|--------|
| • Easy to remove | Yes | • Dielectric breakdown voltage | 4000 V |
| • Temperature resistance (30 min) | 220 °C | • Hand tearability | low |
| • Elongation at break | 110 % | • Sharp color edge | yes |
| • Tensile strength | 75 N/cm | | |

Adhesion to Values

- | | |
|---------|--------|
| • Steel | 4 N/cm |
|---------|--------|

For latest information on this product please visit <http://l.tesa.com/?ip=50600>



tesa[®] 50600

Product Information

Disclaimer

tesa[®] products prove their impressive quality day in, day out in demanding conditions and are regularly subjected to strict controls. All information and recommendations are provided to the best of our knowledge on the basis of our practical experience. Nevertheless tesa SE can make no warranties, express or implied, including, but not limited to any implied warranty of merchantability or fitness for a particular purpose. Therefore, the user is responsible for determining whether the tesa[®] product is fit for a particular purpose and suitable for the user's method of application. If you are in any doubt, our technical support staff will be glad to support you.

For latest information on this product please visit <http://l.tesa.com/?ip=50600>