

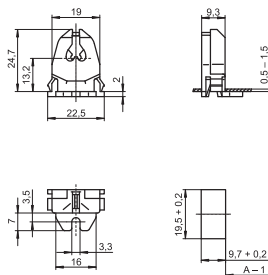
## G5 Lampholders, Accessories

### For fluorescent lamps T5 (T16)

Max. permitted temperature  $T_m$   
on the rear side of the lampholder: 110 °C

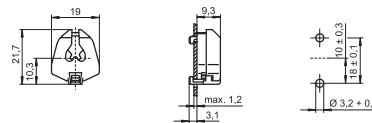
G5 push-through/surface-mounted lampholder  
Lamp axis push-through lampholder: 13.2 mm  
Lamp axis surface-mounted lampholder: 15.2 mm  
Casing: PC, white, T110  
Nominal rating: 2/500  
Push-in terminals: 0.5–1 mm<sup>2</sup>  
Lateral fixing clips for wall thickness 0.5–1.5 mm  
Fixing slot for screw M3  
Weight: 3.2 g, unit: 1000 pcs.  
Type: 09105

**Ref. No.: 100305**



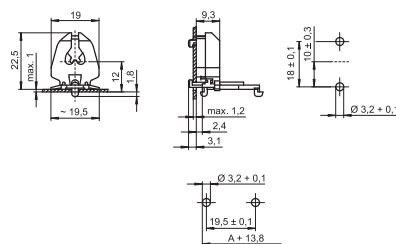
G5 built-in lampholder  
Casing: PC, white, T110  
Nominal rating: 2/500  
Push-in terminals: 0.5–1 mm<sup>2</sup>  
Rear split pins for wall thickness up to 1.2 mm  
Weight: 2.6 g, unit: 1000 pcs.  
Type: 09205

**Ref. No.: 100310**



G5 built-in/push-fit lampholder  
Lamp axis: 12 mm  
Casing: PC, white, T110  
Nominal rating: 2/500  
Push-in terminals: 0.5–1 mm<sup>2</sup>  
Rear split pins for wall thickness up to 1.2 mm  
Base split pins for wall thickness up to 1 mm  
Weight: 2.9 g, unit: 1000 pcs.  
Type: 09210

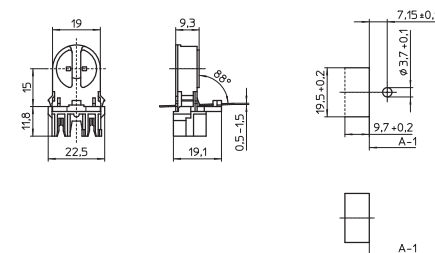
**Ref. No.: 106455**



G5 push-through lampholders  
For the automatic luminaire wiring  
Casing: PBT GF, white, frontplate: PC, white  
Rotor: PBT GF, white, T140, lamp axis: 15 mm  
Nominal rating: 2/500  
IDC terminals for leads H05V-U 0.5  
Lateral fixing clips for wall thickness 0.5–1.5 mm  
Weight: 5 g, unit: 1000 pcs.  
Type: 09420/ 09421

**Ref. No.: 532377** with stop

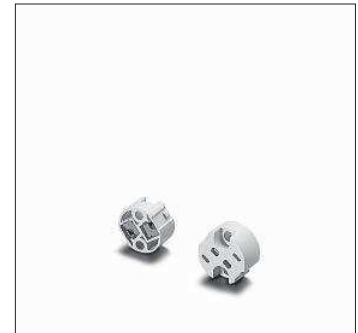
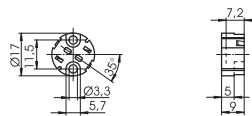
**Ref. No.: 532378** without stop



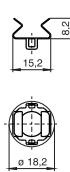
## Lampholders with Separate Mounting Spring for GU4 Lamps

For low-voltage halogen incandescent lamps

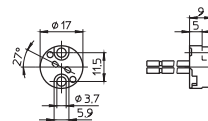
G/GZ4, G/GX5.3, G/GY6.35 lampholder  
 Casing: LCP, natural, T270  
 Nominal rating: 8/24 (for G4/GZ4 lamps: 4/24)  
 Multipoint contacts: CuNiZn  
 Push-in terminals for stranded conductors  
 with ferrule on bare end of core  $\varnothing$  1.4–1.8 mm  
 Fixing holes for screws M3  
 For cover cap (see p. 268)  
 Weight: 2.4 g, unit: 1000 pcs.  
 Type: 33300  
**Ref. No.: 109547**



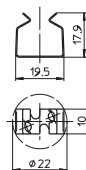
GU4 mounting spring for lamp  
 Material: stainless steel  
 For push-fit onto lampholders type 333 and 32210  
 Weight: 0.8 g, unit: 1000 pcs.  
 Type: 94095  
**Ref. No.: 109553**



G/GZ4, G/GX5.3, G/GY6.35 lampholder  
 Casing: ceramic, cover plate: mica  
 T350  
 Nominal rating: 10/24  
 Contacts: Ni  
 Leads: Cu nickel-plated, stranded conductors  
 0.75 mm<sup>2</sup>, PTFE-insulation, length: 140 mm  
 Fixing holes for screws M3  
 Weight: 6.8 g, unit: 500 pcs.  
 Type: 32400  
**Ref. No.: 100939**



GU4 mounting spring for lamp  
 Material: stainless steel  
 The mounting spring has to be fastened  
 to the lampholder 100939.  
 The luminaire manufacturer is responsible  
 for the attachment.  
 Weight: 1.6 g, unit: 1000 pcs.  
 Type: 94071  
**Ref. No.: 108678**



## GX5.3 Lamp Connectors

For low-voltage halogen incandescent lamps

GX5.3 lamp connectors

Casing: ceramic, cover plate: mica  
T300, nominal rating: 10/24

Multipoint contacts: Ni

Leads: Cu nickel-plated, stranded conductors  
0.75 mm<sup>2</sup>, PTFE-insulation, length: 140 mm

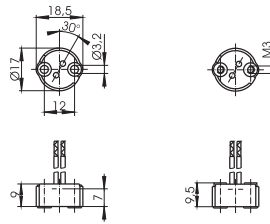
Weight: 7.8/8.5 g, unit: 500 pcs.

Type: 32600 holes for screws M3

**Ref. No.: 101162**

Type: 32620 threaded bushes M3

**Ref. No.: 101207**



## GU5.3 Lampholders

For low-voltage halogen incandescent lamps

GU5.3 lampholder

Casing: ceramic, cover plate: mica  
T350, nominal rating: 10/24

Contacts: Ni

Leads: Cu nickel-plated, stranded conductors  
0.75 mm<sup>2</sup>, PTFE-insulation, length: 140 mm

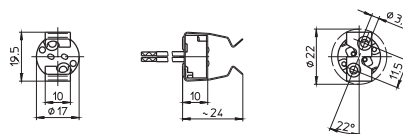
Fixing holes for screws ST2.9

Mounting spring for lamp: stainless steel

Weight: 9.1 g, unit: 1000 pcs.

Type: 32480

**Ref. No.: 106457**



GU5.3 lampholders

Casing: ceramic, cover plate: mica  
T300, nominal rating: 10/24, multipoint contacts: Ni

Leads: Cu nickel-plated, stranded conductors  
0.75 mm<sup>2</sup>, PTFE-insulation, length: 140 mm

Mounting spring for lamp: stainless steel

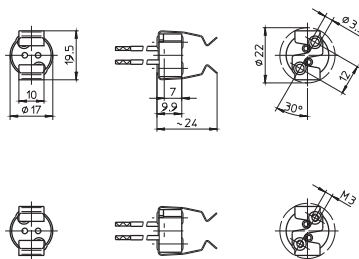
Weight: 11/12 g, unit: 500 pcs.

Type: 32680 holes for screws M3

**Ref. No.: 101248**

Type: 32690 threaded bushes M3

**Ref. No.: 101253**



## R7s Ceramic Lampholders

### For mains voltage halogen incandescent lamps

The luminaire design must ensure protection from electric shock as well as sufficient creepage distances and clearances from live parts on the back of lampholder.

If the central hole on the bracket is used for fixing there must be a support within the luminaire to ensure that the bracket cannot be deformed.

Partly enclosed R7s lampholder

Casing: ceramic, T350

Contact pin: Cu, silver bulb

Nominal rating: 8/250

Leads: Cu nickel-plated, stranded conductors

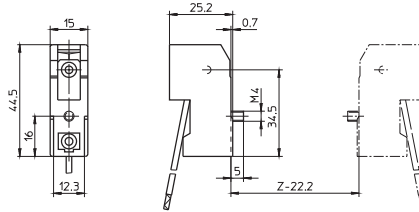
0.75 mm<sup>2</sup>, PTFE-insulation, length: 200 mm

With fixing screw M4

Weight: 25.4 g, unit: 400 pcs.

Type: 32300

**Ref. No.: 100912**



Partly enclosed R7s lampholder

Casing: ceramic, T350

Contact pin: Cu, silver bulb

Nominal rating: 8/250

Leads: Cu nickel-plated, stranded conductors

0.75 mm<sup>2</sup>, PTFE-insulation, length: 200 mm

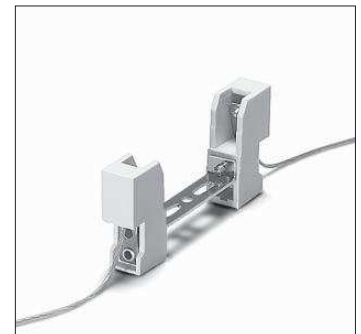
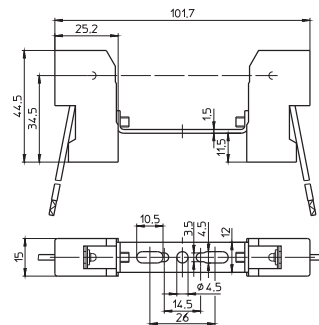
Oblong holes for screws M3/M4

Central hole for screw M4

Weight: 59.3 g, unit: 200 pcs.

Type: 32390 contact distance: 74.9 mm

**Ref. No.: 107213**



Partly enclosed R7s lampholder

Casing: ceramic, T350

Contact pin: Cu, silver bulb

Nominal rating: 8/250

Leads: Cu nickel-plated, stranded conductors

0.75 mm<sup>2</sup>, PTFE-insulation, length: 200 mm

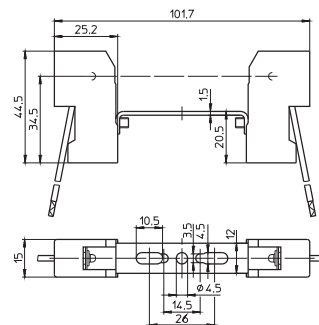
Oblong holes for screws M3/M4

Central hole for screw M4

Weight: 61 g, unit: 200 pcs.

Type: 32391 contact distance: 74.9 mm

**Ref. No.: 107214**



Partly enclosed R7s lampholder

Casing: ceramic, T350

Contact pin: Cu, silver bulb

Nominal rating: 8/250

Leads: Cu nickel-plated, stranded conductors

0.75 mm<sup>2</sup>, PTFE-insulation, length: 200 mm

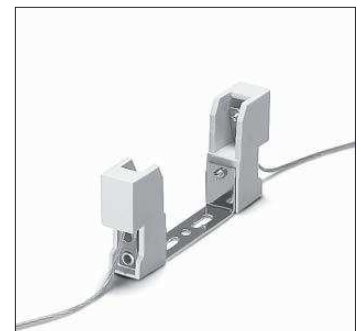
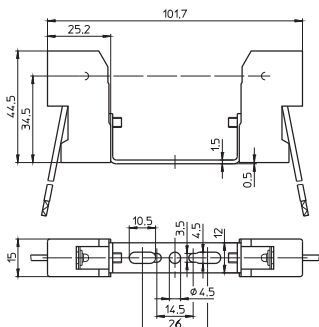
Oblong holes for screws M3/M4

Central hole for screw M4

Weight: 61.3 g, unit: 200 pcs.

Type: 32395 contact distance: 74.9 mm

**Ref. No.: 107215**



1

2

3

4

5

6

7

8

9

10

# Lampholders for Halogen Incandescent Lamps

Partly enclosed R7s lampholder

Casing: ceramic, T350

Contact pin: Cu, silver bulb

Nominal rating: 8/250

Leads: Cu nickel-plated, stranded conductors

0.75 mm<sup>2</sup>, PTFE-insulation, length: 200 mm

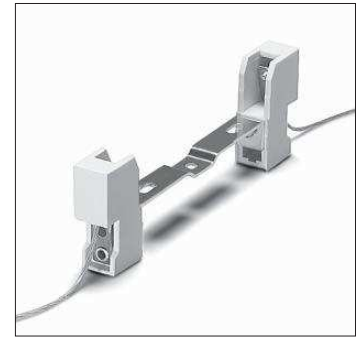
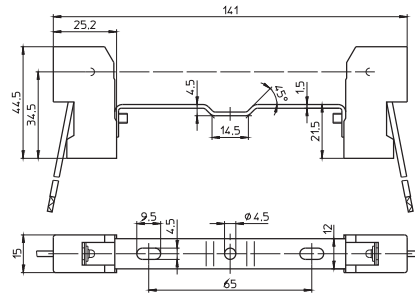
Oblong holes for screws M4

Central hole for screw M4

Weight: 64.9 g, unit: 200 pcs.

Type: 32310 contact distance: 114.2 mm

**Ref. No.: 107195**



Partly enclosed R7s lampholder

Casing: ceramic, T350

Contact pin: Cu, silver bulb

Nominal rating: 8/250

Leads: Cu nickel-plated, stranded conductors

0.75 mm<sup>2</sup>, PTFE-insulation, length: 200 mm

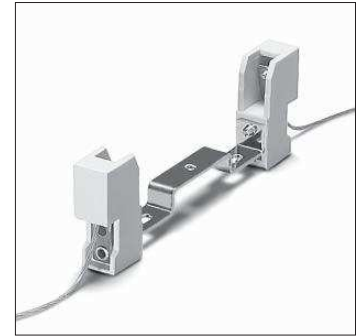
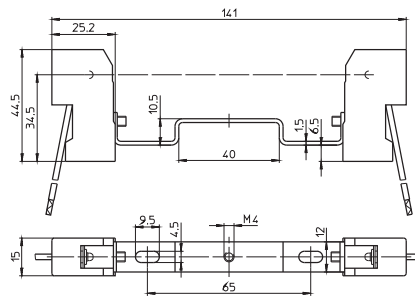
Oblong holes for screws M4

Central threaded bush M4

Weight: 66.5 g, unit: 200 pcs.

Type: 32320 contact distance: 114.2 mm

**Ref. No.: 107194**



Partly enclosed R7s lampholder

Casing: ceramic, T350

Contact pin: Cu, silver bulb

Nominal rating: 8/250

Leads: Cu nickel-plated, stranded conductors

0.75 mm<sup>2</sup>, PTFE-insulation, length: 200 mm

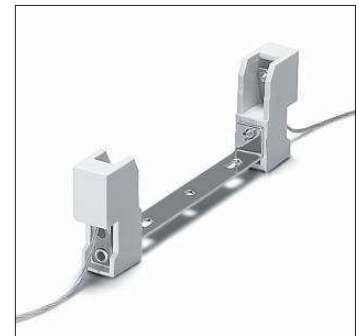
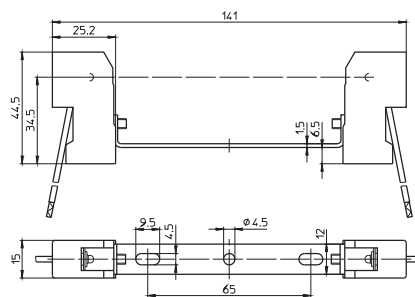
Oblong holes for screws M4

Central hole for screw M4

Weight: 65.4 g, unit: 200 pcs.

Type: 32340 contact distance: 114.2 mm

**Ref. No.: 107193**



Partly enclosed R7s lampholder

Casing: ceramic, T350

Contact pin: Cu, silver bulb

Nominal rating: 8/250

Leads: Cu nickel-plated, stranded conductors

0.75 mm<sup>2</sup>, PTFE-insulation, length: 200 mm

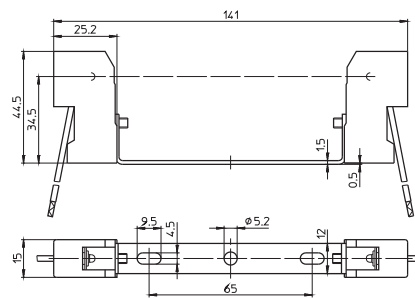
Oblong holes for screws M4

Central hole for screw M5

Weight: 66.7 g, unit: 200 pcs.

Type: 32360 contact distance: 114.2 mm

**Ref. No.: 107192**



Partly enclosed R7s lampholder

Casing: ceramic, T350

Contact pin: Cu, silver bulb

Nominal rating: 8/250

Leads: Cu nickel-plated, stranded conductors

0.75 mm<sup>2</sup>, PTFE-insulation, length: 200 mm

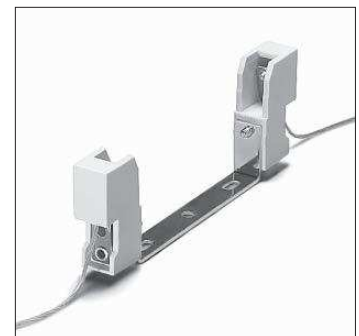
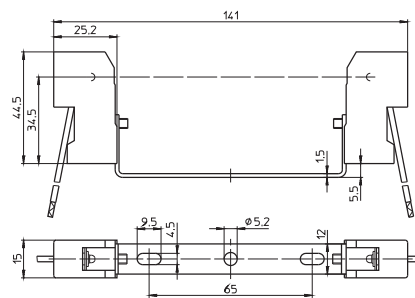
Oblong holes for screws M4

Central hole for screw M5

Weight: 71.3 g, unit: 200 pcs.

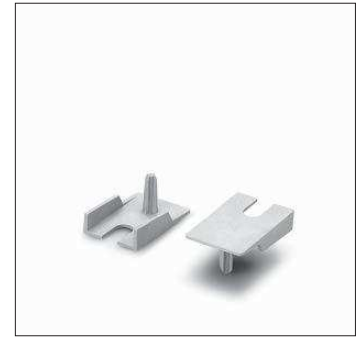
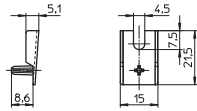
Type: 32380 contact distance: 114.2 mm

**Ref. No.: 109497**



# Lampholders for Halogen Incandescent Lamps

Protection cap for R7s lampholders  
 For push-fit onto lampholders type 323  
 Protection against electrical shock  
 on the rear side of the lampholder  
 Lampholder with assembled protection cap on request  
 Material: LCP, natural  
 Weight: 0.7 g, unit: 1000 pcs.  
 Type: 97528  
**Ref. No.: 507592**



1

2

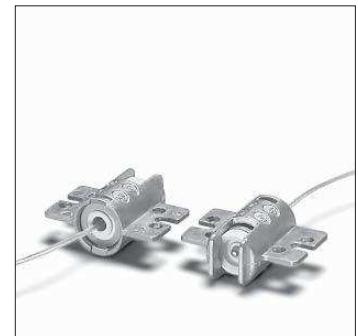
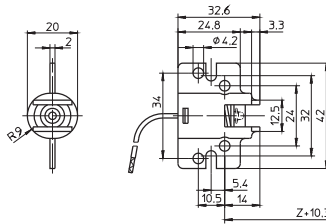
3

4

## R7s Metal Lampholders

For mains voltage halogen incandescent lamps

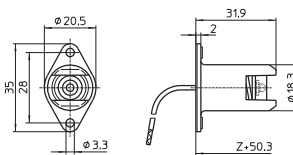
R7s lampholder  
 Casing: Al, T300, contact pin: Ni  
 Nominal rating: 10/250  
 Lead: Cu nickel-plated, stranded conductors  
 0.75 mm<sup>2</sup>, PTFE-insulation, length: 300 mm  
 Fixing flange  
 Fixing holes for screws M4  
 Weight: 21 g, unit: 50 pcs.  
 Type: 30023  
**Ref. No.: 100616**



5

6

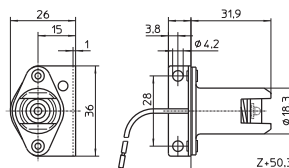
R7s lampholder  
 Casing: Al, T300, contact pin: Cu, silver bulb  
 Nominal rating: 10/250  
 Lead: Cu nickel-plated, stranded conductors  
 1 mm<sup>2</sup>, PTFE-insulation, length: 300 mm  
 Fixing flange  
 Fixing holes for screws M3  
 Weight: 15.7 g, unit: 1000 pcs.  
 Type: 30523  
**Ref. No.: 100710**



7

8

R7s lampholder  
 Casing: Al, T300, contact pin: Cu, silver bulb  
 Nominal rating: 10/250  
 Lead: Cu nickel-plated, stranded conductors  
 1 mm<sup>2</sup>, PTFE-insulation, length: 350 mm  
 Fixing bracket  
 Fixing holes for screws M4  
 Weight: 24.8 g, unit: 500 pcs.  
 Type: 30550  
**Ref. No.: 100720**



9

10