

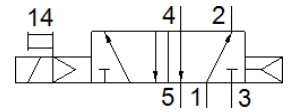
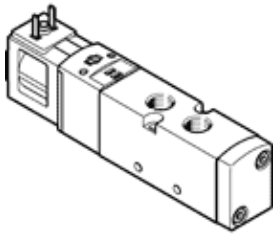
# solenoid valve

## VUVS-LK20-M52-AD-G18-1C1-S

Part number: 8043214

★ Core product range

FESTO



## Data sheet

Feature	Value
Valve function	5/2 monostable
Type of actuation	electrical
Valve size	21 mm
Standard nominal flow rate	550 l/min
Operating pressure	1.5 ... 8 bar
Design structure	Piston slide
Type of reset	Air spring
Protection class	IP65 with plug socket to IEC 60529
Nominal size	5.2 mm
Exhaust-air function	throttleable
Sealing principle	soft
Assembly position	Any
Manual override	detenting Pushing
Type of piloting	Piloted
Pilot air supply	Internal
Flow direction	non reversible
Overlap	Positive overlap
b value	0.38
C value	2.66 l/sbar
Switching time off	22 ms
Switching time on	17 ms
Duty cycle	100 %
Max. positive test pulse with logic 0	2,700 µs
Max. negative test pulse with logic 1	1,100 µs
Characteristic coil data	24 V DC: 2.4 W
Permissible voltage fluctuation	+/- 10 %
Operating medium	Compressed air in accordance with ISO8573-1:2010 [7:4:4]
Note on operating and pilot medium	Lubricated operation possible (subsequently required for further operation)
Vibration resistance	Transport application test at severity level 2 in accordance with FN 942017-4 and EN 60068-2-6
Shock resistance	Shock test with severity level 1 in accordance with FN 942017-5 and EN 60068-2-27
Corrosion resistance classification CRC	1 - Low corrosion stress
Medium temperature	-5 ... 50 °C
Pilot medium	Compressed air in accordance with ISO8573-1:2010 [7:4:4]
Ambient temperature	-5 ... 50 °C
Product weight	145 g
Electrical connection	to EN 175301-803 Plug pattern type C to EN 175301-803
Mounting type	Optional on manifold rail with through hole

Feature	Value
Scavenging orifice connection	Non-ducted
Pneumatic connection, port 1	G1/8
Pneumatic connection, port 2	G1/8
Pneumatic connection, port 3	G1/8
Pneumatic connection, port 4	G1/8
Pneumatic connection, port 5	G1/8
Materials note	Contains PWIS substances Conforms to RoHS
Material seals	HNBR NBR
Material housing	Wrought Aluminium alloy
Material Piston slide	Wrought Aluminium alloy