

Flat-base containers



wez BlackLine flat-base containers are available in 4 sizes: 200 x 150, 300 x 200, 400 x 300 and 600 x 400 mm. Stacking heights range from 44 to 400 mm.

wez BlackLine flat-base containers are ideal to ensure smooth transportation on conveyor belts, roller tracks or ball tables, etc. and for BlackLine cases. Flat-base containers can be stacked in the normal manner (except over 2 of the next smaller size) and they have the same features as our standard containers (see page 6).



All containers marked with ESD sign in accordance with IEC 61340-5-1

C

Part No.	External dim. mm	Stacking h. mm	Internal dim. mm	Usable depth	Capacity, litres	Approx weight g
2108.007.992	200 x 150 x 100	88	155 x 106 x 096	84	1.6	240
2113.007.992	200 x 150 x 145	133	155 x 106 x 142	129	2.7	375
3208.007.992	300 x 200 x 100	88	254 x 154 x 096	83	3.75	520
3213.007.992	300 x 200 x 145	133	254 x 154 x 141	128	5.5	720
4304.007.992	400 x 300 x 053	44	354 x 254 x 049	40	1.0	540
4308.907.992	400 x 300 x 100	88	354 x 254 x 096	80	1.6	1030
4313.907.992	400 x 300 x 145	133	354 x 254 x 141	125	2.7	1200
4313.097.992	400 x 300 x 145	133	354 x 254 x 141	125	2.7	815
4320.007.992	400 x 300 x 212	200	354 x 254 x 208	192	4.0	1610
4326.007.992	400 x 300 x 278	266	354 x 254 x 274	260	5.5	1975
4332.007.992	400 x 300 x 320	308	354 x 254 x 316	300	6.5	2100
6408.007.992	600 x 400 x 100	88	554 x 354 x 096	80	12.0	1650
6413.007.992	600 x 400 x 145	133	554 x 354 x 141	120	18.0	2050
6413.097.992	600 x 400 x 145	133	554 x 354 x 141	120	18.0	1210
6420.007.992	600 x 400 x 212	200	554 x 354 x 208	192	24.0	2550
6426.007.992	600 x 400 x 278	266	554 x 354 x 273	260	33.0	3070
6432.007.992	600 x 400 x 320	308	554 x 354 x 316	300	39.0	3400
6440.007.992	600 x 400 x 412	400	554 x 354 x 407	395	82.0	4605

Artikel-Nr.	Typ
96 27 35	21 - 701 - 0025
96 27 36	21 - 701 - 0030
96 27 37	21 - 701 - 0035
96 27 38	21 - 701 - 0040
96 27 39	21 - 701 - 0045
96 27 40	21 - 701 - 0055
96 27 41	21 - 701 - 0060
96 27 42	21 - 701 - 0065
96 27 43	21 - 701 - 0070
96 27 44	21 - 701 - 0075

VISTA storage containers

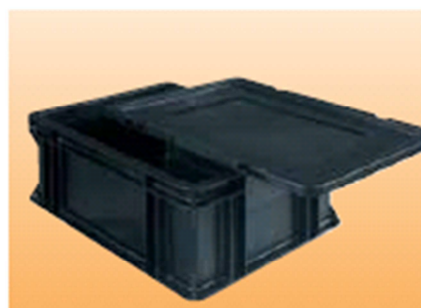


BlackLine VISTA containers are available in 3 sizes and are fully compatible with all wez standard containers. They feature an inspection / handling opening on the front, optional transparent or conductive panels and a rugged

suspension system, capable of taking up to 25 kg. Reinforced ribbed base offers high loading capabilities with perfect movement on roller systems. Suspension racks are also available in either bench or trolley versions.

Part No.	Description	Ext. dim. mm	Int. dim. mm
2113.550.992	VISTA storage containers	200 x 150 x 145	155 x 135 x 130
3213.550.992	VISTA storage containers	300 x 200 x 145	255 x 180 x 130
4313.550.992	VISTA storage containers	400 x 300 x 145	355 x 260 x 130
9980.059.000	Front panel F32/21, transparent	120 x 065	
9980.060.000	Front panel F43, transparent	180 x 065	
9980.073.000	VISTA labels, per 100	025 x 080	

Lids



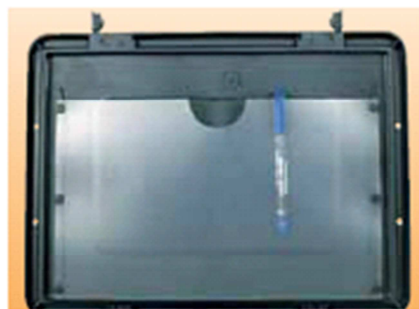
Loose lid without fasteners, 3 sizes.
Code: 000



Lid with 4 swing latches for simple, secure fixing to container, 3 sizes. Code: 044



Hinged lid with 2 swing latches. Plug-in hinges, which may be removed with the lid open. 3 sizes.
Code: 032



Hinged lid with integral document holder. A4 size, ideal for operating manuals, product literature, etc. 400 x 300 size only.

BlackLine lids for all BlackLine containers, in three sizes and three different versions. Containers will stack even when the lids are fitted.



All lids marked with ESD sign in accordance with IEC 61340-5-1

C



Plug-in hinge, cannot be removed with lid closed.



Swing latches (pair), for reliable lid closure. Easily retrofitted to 000 version lid.



Lid seal to prevent unauthorised opening of swing latches. Ensures 100% product security.

Part No.	Size mm	Item / option
3200.000.992	300 x 200	
4300.000.992	400 x 300	Lid, loose
6400.000.992	600 x 400	
3200.032.992	300 x 200	Artikel-Nr: Typ
4300.032.992	400 x 300	96 27 45 21 - 704 - 0025
6400.032.992	600 x 400	96 27 46 21 - 704 - 0030
3200.044.992	300 x 200	
4300.044.992	400 x 300	Lid with 4 swing latches
6400.044.992	600 x 400	
4300.932.992	400 x 300	
6400.932.992	600 x 400	Lid with integral A4 document holder
9980.011.992		Lid hinge
9980.012.994		Swing latches (pair)
9980.141.000		Lid seal, per 100

wezRack® system



wezRack wall 300:

Number of slots 20
 Slot width/depth 3.5 / 2.5 mm
 Slot pitch 10.16 mm

Options	Part No.	Version
Single wall 300: 255 x 180 x 22 mm		
	2518.000.992	without slot stop
	2518.022.992	with slot stop 322
	2518.900.992	Al-reinforced without slot stop
	2518.922.992	with slot stop 322 + Al-reinf.
Double height wall 300: 255 x 345 x 22 mm		
	2534.000.992	without slot stop
	2534.022.992	with slot stop 322
	2534.900.992	Al-reinforced without slot stop
	2534.922.992	with slot stop 322 + Al-reinf.



wezRack wall 400:

Number of slots 30
 Slot width/depth 3.5 / 2.5 mm
 Slot pitch 10.16 mm

Options	Part No.	Version
Single wall 400: 355 x 180 x 22/32 mm		
	3518.000.992	
	3518.022.992	
	3518.032.992	
	3518.900.992	
	3518.922.992	
	3518.932.992	
Double height wall 400: 355 x 345 x 22/32 mm		
	3535.000.992	
	3535.022.992	
	3535.032.992	
	3535.900.992	Al-reinforced without slot stop
	3535.922.992	with slot stop 432 + Al-reinf.
	3535.932.992	with slot stop 432 + Al-reinf.

Artikel-Nr.	Typ
96 27 48	21 - 708 - 0410
96 27 49	21 - 708 - 0440



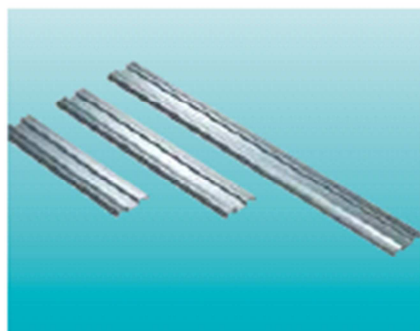
wezRack wall 600:

Number of slots 49
 Slot width/depth 3.5 / 2.5 mm
 Slot pitch 10.16 mm

Options	Part No.	Version
Single wall 600: 555 x 180 x 22/25 mm		
	5518.000.992	
	5518.025.992	
Double height wall 600: 555 x 345 x 22/25 mm		
	5535.000.992	
	5535.025.992	
	5535.900.992	
	5535.925.992	with slot stop 625 + Al-reinf.

Artikel-Nr.	Typ
96 27 50	21 - 708 - 0610
96 27 51	21 - 708 - 0630

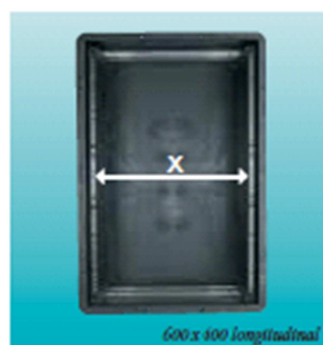
wezRack® system



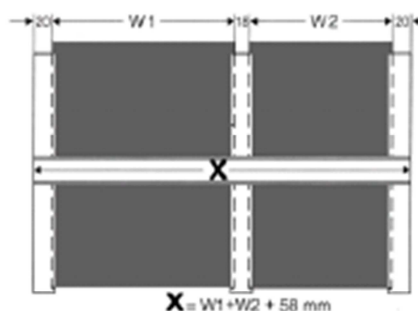
Aluminum rack profile rails for 180 series walls, standard lengths are available to suit BlackLine containers or can be cut to length.

Part No.	Length
9980.074.000	Individual length in mm
9980.074.256	256 mm
9980.074.356	356 mm
9980.074.556	556 mm
9980.075.345	345 cm

Artikel-Nr.	Typ
96 27 52	21 - 708 - 0010
96 27 53	21 - 708 - 0015
96 27 54	21 - 708 - 0020



Container size, rack orientation	wezRack wall type	Al profile rail length	Max. width of PCB	No. of slots
400x300 lateral	2518/2534	356 mm	x = 320 mm	20
400x300 longitudinal	3518/3535	256 mm	x = 220 mm	30
600x400 lateral	3518/3535	556 mm	x = 520 mm	30
600x400 longitudinal	5518/5535	356 mm	x = 320 mm	49



wezRack-version VFA



The wezRack rack adapter / plug-in element allows even faster adjustment between different PCB sizes. Mount 600 mm wezRack partitions at each end of the profile rails and fix rack adapters at the required positions. The plug-in elements (slotted partitions 500/525 mm) may be quickly moved from one rack adapter position to another. The system suits the BlackLine container size 600 x 400 mm.

Specifying profile rail lengths:
The profile rail length (Dim X) is calculated from the above data.
W = PCB sizes (mm),
X = Profile rail length (mm)

Part No.	Description	Options
5018.000.992*	Slotted partition 500 (plug-in element)	without slot stop
5018.025.992*	Slotted partition 525 (plug-in element)	with slot stop 625
9980.090.994*	Rack adapter	180 x 22 x 20 mm
9980.074.356	Profile rail	356 mm

*Availability on request only.