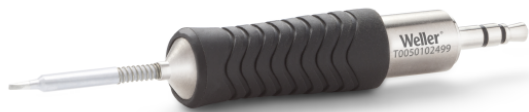


RTP 008 S MS

Product no.: T0050102499



Benefits

- › Short tip-to-grip distance: Close working distance to the component for higher precision and maximum control
- › MIL-SPC / IPC standard (potential free): Reduces risk of damage to sensitive micro components and workpieces. No rework, lower total cost of ownership
- › Active tip technology: Fastest heat-up and recovery time, sensor close to the solder tip, excellent heat transfer. No downtime, continuing workflow, excellent results
- › Digital tool for data storage: Motion activated usage sensor for energy control and data storage
- › Patented tip & grip design: Only soldering tip on the market which can be changed without a tool. 20% faster change than leading competitors.
- › One intelligent platform: One station for all active tips & tools. WX platform meets all operational hand soldering needs.

**Technical Data**

Tip shape	Chisel shape
Tip type	MS
Width in mm	0.8
Width in inches	0.031
Thickness in mm	0.3
Thickness in inches	0.012
Length mm	16.3
Length inches	0.642
Power	40 W
Packaging unit	1